



Eldon

Eldon Tool and Engineering Ltd

28 Don Road
Sheffield
S9 2UB
England

W www.eldontool.co.uk

E info@eldontool.co.uk

T +44 (0)114 2800 500

F +44 (0)114 2494 167



Part of the **Tool Connection**



www.eldontool.co.uk



Eldon

Eldon Tool and Engineering Ltd



NEW 2011 PRODUCTS



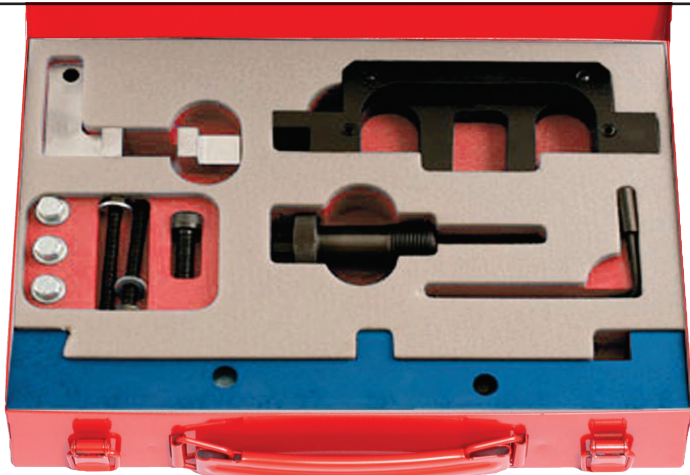
www.eldontool.co.uk

Engine Timing Tools

23348

**Valve Timing Tool Set - BMW 1.6
E81 | E87 | E90 (N40 | N45 | N45T)**

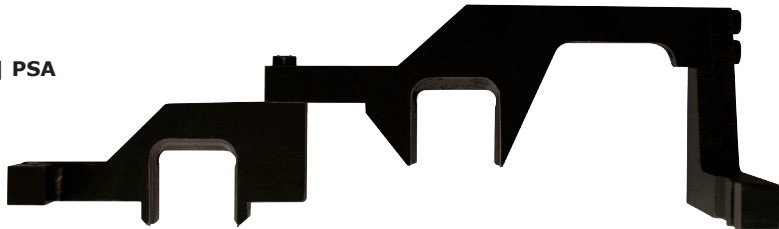
For enabling the correct valve timing to be set on twin camshaft petrol engines used in the following models
116i E81/E97 | 316i E46/E90 | 316Ci/316 ti E46.



23178

**Engine Timing Tool Set - BMW - Mini Cooper N12 | PSA
(No pre load tool)**

This new tool set enables the correct valve timing on these popular 1.4 and 1.6 Valvetronic petrol engines code N12. Also Peugeot 207/308 and Citroën C4 with engine codes EP3 and EP6.

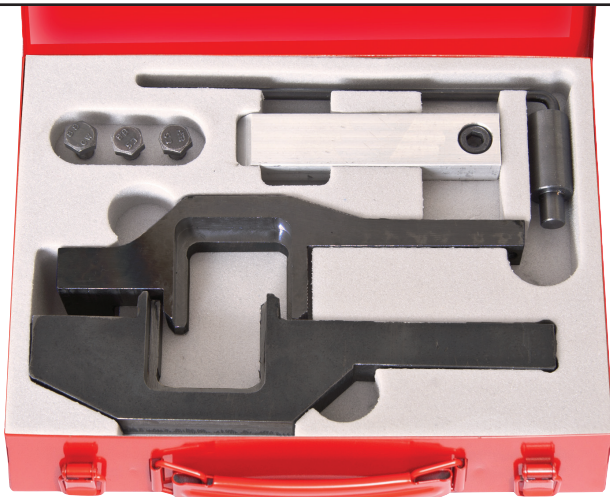


23179

Engine Service Set - BMW - Mini Cooper N14 | PSA

This new tool set enables the correct valve timing on these popular 1.6 turbo petrol engines code N14 | R56, Also Peugeot 207 | 308 and Citroën C4 with engine codes EP6 and EP6 DT | DTS.

Supplied in metal storage box or modular pack.



23448

Engine Timing Set - BMW N47 | N47S (D20A)

An engine timing tool kit specifically introduced for the current generation of BMW 2.0 diesel engines.

Applications include BMW 2.0 N47 | N47S (2007-2010).

Pump Pulley Removal Tool included.

Manufactured from selected steel.

Essential tool kit.



23029

Oil Filter Removal Tool - Jaguar

For the safe and simple removal and fitting of the Oil Filter cartridge.

Operated with 3/8"D socket accessories.

Suitable for filter cartridges as fitted to V8 petrol engines generally available on models XJ | XF | S Type and XK series.



27017

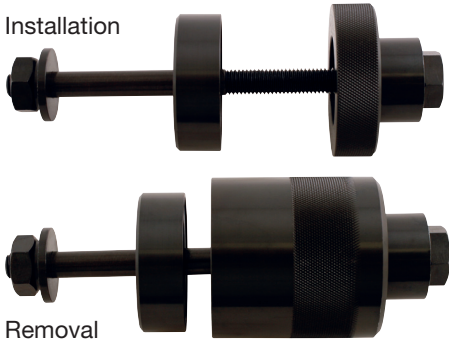
Suspension Bush Replacer - Ford Ka | Fiesta

This tool set enables the insitu removal and installation of rear axle suspension bushes on models (96-).

It is also unnecessary to remove the suspension trailing link when using this tool.

Thread made from high tensile steel and fitted with friction bearing.

Supplied in a plastic storage tube with full instructions.



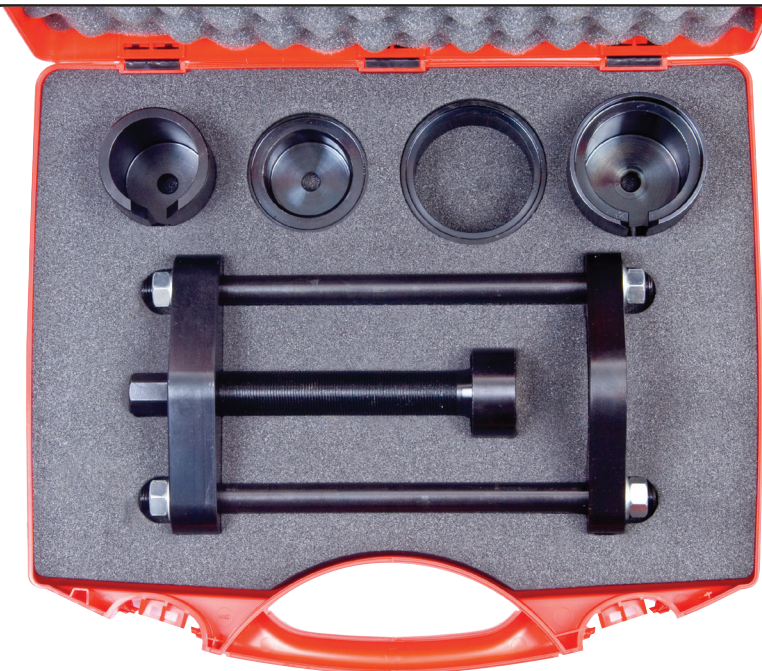
27018

Rear Suspension Bush Removal Kit - Ford

Utilising a robust press frame design, this tool enables the removal and replacement of suspension bushes on Ford Ka (96-08) | Fiesta (96-02) | Puma (97-02) and Focus (98-05)models.

Increased power is developed by utilising a strong thrust bearing and high strength force screw with built in magnetic adaptor connection.

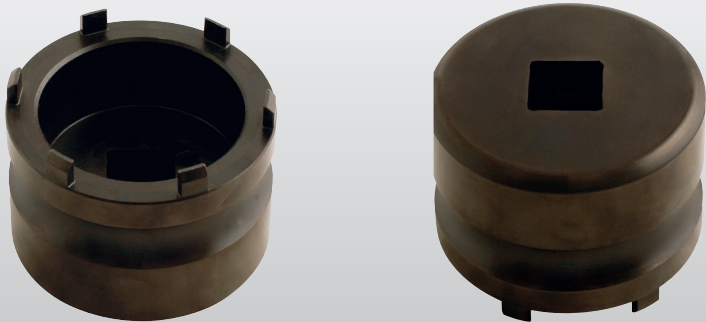
For use on the vehicle without removing the axle.



23043

Hub Nut Socket Volkswagen Crafter | Renault | Vauxhall 3/4"D

This special socket, made from High Strength Steel is designed for the removal and replacement of castellated hub nuts now used on Volkswagon Crafter and Vauxhall Movano-B vans.



23060-70

Viscous Fan Holding Tool - Ford

This 1/2"D. special wrench is required to remove and install the viscous fan rotor as fitted to Ford Transit models (01-06) (OEM ref. 303-1196).

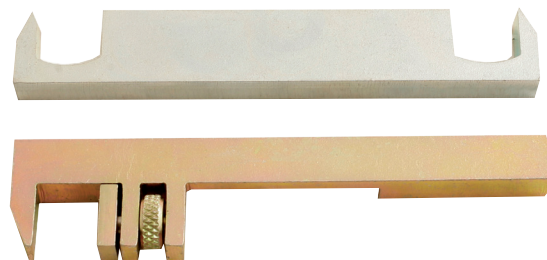


23025

Injector Alignment Tool - Diesel

Tools for aligning the injectors to the fuel lines in the event of either the injectors or fuel lines being removed.

Specifically for Ford DuraTorq Diesel engines 2 - 2.2 | 2.4 litre used on the Mondeo, Transit and Jaguar X type 400.



23028

Bosch Injector Double Adaptor Removal Tool

This specially designed twin thread adaptor enables connection to both the M17 internal thread and M27 external thread.

This adaptor is for use in conjunction with a 5/8" UNF Slide Hammer.

Available separately:

Part No. 21050-01 - Slide Hammer Assy. weight 600g.



23048-46

Fuel Pump Removal Tool - BMW

This fuel pump removal tool is a stand alone tool that does not require an additional puller.

For use on BMW Series 1 | 3 | 5 and X1 | X3 with N47 2.0D chain driven engines.



K00130

Fuel Pump Removal Tools

A shorter version covering some BMW, Land Rover, Rover and GM models.

Two sleeves are supplied to increase the application list.

The BMW application allows the removal of the sprocket from the shaft when removing the injection pump VP44 and HP CR Pump. Used without centring ring for VP Pumps and with Common rail pumps.

This kit has a shorter Puller body to fit transverse engines.

The applications for Vauxhall/Opel | Land Rover and Rover is specifically for transverse mounted engines where space is at a premium.



K00003

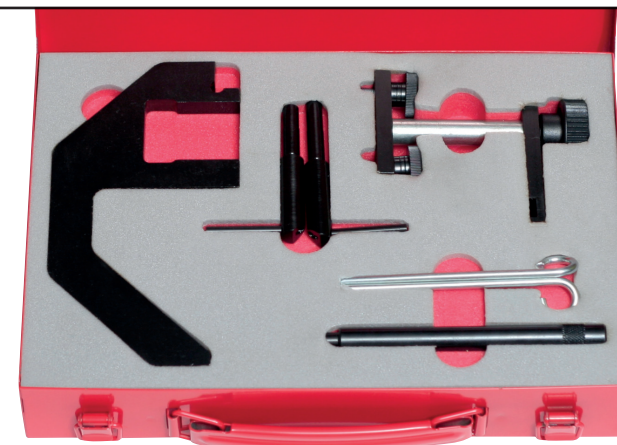
Engine Timing Tool Set - BMW 2.0D M47 | M47S

An engine timing tool kit specifically introduced for the current generation of BMW 2.0 diesel engines.

Applications include BMW 2.0 M47 | M47S (2007-2010).

Pump Pulley Removal Tool included.

Essential tool kit manufactured from selected steel.



K00004

Timing Set - BMW

Applications for engine code 20 4D 4 on 2.0 4 cylinder diesel engines fitted to 1/3 series/X3.

Engine ref E81 | 82 | 87 | 88 | 46 | 60 | 61 | 83 | 90 | 91 | 92 | 93 | 65 | 66 | 53 | 70 | 71 | 72.

Applications for engine code 30 6D 2 | 3 | 4 | 5 on 3.0 6 cyl diesel engines fitted to 3/5/7 Series, X3/X5/X6.

Upgrades 23048-00 (K00003).



UPGRADE KIT

K00086

Engine Timing Set - Chrysler 2.5 | 2.8 R25

Engine timing locking tool kit for Chrysler 2.5 Common Rail Diesel engines fitted to Chrysler Voyager | Grand Voyager and LDV Maxus.

For use on Chrysler 2.5CRD diesel engines with engine codes R2516C | R2516I.

Fitted to Voyager | Grand Voyager and LDV MAXUS Essential tool.



K00007

Engine Timing Set - Fiat | Alfa Romeo JTD 1.6 | 1.9 | 2.0 | 2.4

Check and adjust the Camshaft timing, remove and replace the Cam belt and perform complete cylinder head rebuilds whilst maintaining the correct valve timing on 1.6 | 1.9 | 2.4 JTD Multijet Diesel engines on Fiat and Alfa Romeo SOHC | DOHC.

For use on Fiat/Alfa JTD multijet diesel engines 1.6 | 1.9 | 2.4 SOHC | DOHC.

Fits a wide range of models.



23230

Petrol Engine Timing Tool Set - Fiat 1.2 | 1.4 8v

This new tool set enables the correct valve timing when servicing and/or replacing the timing belt on many models including 500, Idea, Grande Punto, Linea, Doblo and Panda with engines 169A4000, 199A4000, 350A1000 and (EVO2 – 188A4000 (07-).

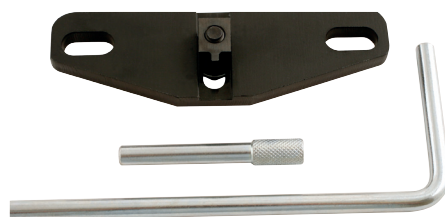
Also suitable for Ford Ka 1.2 (09-)



23060-50

Engine Timing Set - Ford Land Rover | Peugeot | Volvo 2.0 | 2.2D

This compact tool set includes the camshaft sprocket and flywheel locking tools and flywheel timing pin required when setting the valve timing and/or changing the timing belt on DW12 series engines used in Land Rover Freelander 2, TD4 2.2 Duratorq TDCi (06-) and Ford S-Max | Galaxy 2.0 TDCi also Peugeot Boxer | 807 2.2 HDi.



23026

Engine Crankshaft Holding Tool - Ford

This special Holding Tool is necessary to stop the crankshaft rotating when releasing and tightening the crankshaft pulley fasteners. The special profile fits over the bolt heads and permits the use of a long reach socket.

Suitable for use on Ford Mondeo and Transit models with 2.0, 2.4 and 3.2 Duratorq TDCi diesel engines (01-) OEM 303-1310.



23033

Engine Timing Set - Jaguar 4.0L | 4.2V8

Specifically introduced for Pre 2010 4.0/4.2 V8 petrol engines fitted with timing chains.

Application pre 2010 models including Daimler V8 | Sport 4.0 | 3.2 | 4.2 | 3.5 | S type | XJ8 | XJR | XK8 | XKR.

Engine codes: BC | LB | LC | GC | AC | KC | DC | CC | CE | NC | EC | PA | HB | 1B | RB | SB | TB | 3B | PC | NB.

Also fits Jaguar engines fitted to Land Rover Discovery 3, Range Rover 4.2 Supercharged 4.4 with engine codes 4PN | 428PS.

Packed in foam and a metal case.

ALSO
LAND
ROVER



23183

Engine Timing Tool Set - Renault 2.0 DCi | Vauxhall/Opel | Nissan

This engine timing tool set includes important tools for chain driven dCi diesel engines.



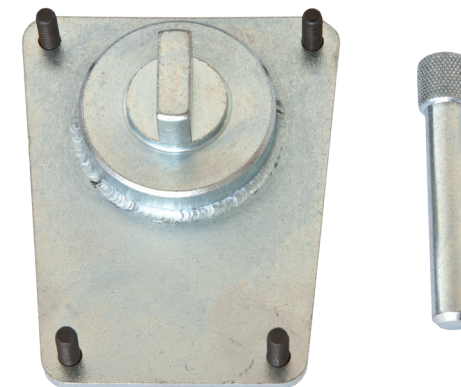
23036

Engine Timing Tool Set - Vauxhall/Opel | Z20DM | Chevrolet

Developed for the late GM/Chevrolet 2.0 common rail diesel engine this kit holds the correct position of the camshafts and crankshaft whilst changing the timing belt on SOHC 16v engines.

Applications: GM Antara | Chevrolet | Captiva | Cruze | Epica and Lacetti.

Engine Codes: Z20DM | Z20DMH | LLWZ20DMH | RA420 | Z20SI | Z20S3 | Z20S4 | Z20S5.



23161-40

Engine Timing Tool Set - VAG 1.6 and 2.0 CR PD

This new set has been compiled to suit the new series of 'Common Rail' engines being used in certain 5th generation 'Blue Motion' models introduced in 2010 which include Polo 1.6 TDi (90PS) and Golf 1.6.

Also suitable for Golf 2.0 TDi | Caddy 2.0 TDi | Scirocco (143 and 170 bHP) Audi A4 2.0 TDi (08-) | Seat Ibiza 1.6 TDi



E10074

Crankshaft Pulley Holding Tool - Volvo

Specifically designed Crankshaft Pulley Holding Tool for Volvos.

OEM: 999 5433



Service Tools •

21060

Brake Rewind Tool Set - Vauxhall/Opel

This tool is specially designed to permit the simple retraction of Brake Pistons on Calipers fitted to Vauxhall/Opel cars.

Suitable for Zafira | Zafira CNG | Vectra C | Signum | Corsa-C | Combo | Astra G Front-Pushback | Astra H | Astra car van CNG | Insignia and Meriva.

Recent additions include the latest Reaction Strap to suit Movano-B and two adaptors to fit Speedster.

