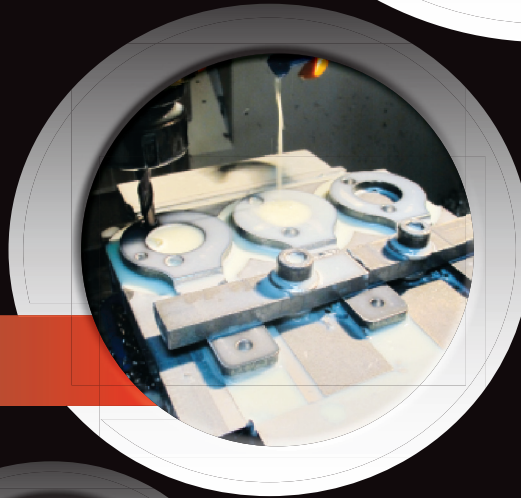


Eldon

Eldon Tool and Engineering Ltd



Manufacturers of
**Specialist
Automotive
Tools**

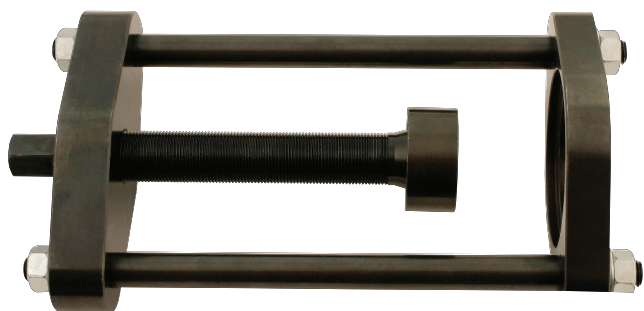


**Precision
Engineering
at its best**



 **MADE IN
SHEFFIELD**

www.eldontool.co.uk

K00345**PRESS FRAME - BUSH | BALL JOINT REMOVAL**

- For bush / ball joint removal where hydraulic presses are not available
- Intended for use with Part No. K00162 (force tube set for Mercedes-Benz front ball joints) or with Part No. K00453 (Ford rear suspension bush removal kit – cups only)

K00158**BMW REAR SUSPENSION TRUNION REMOVER | INSERTER**

E Number	Model	Year
E38	7 Series	95 - 01
E39	5 Series	95 - 03
E52	Z 8	00 - 03
E60	5 Series	03 - 10
E61	5 Series Est.	03 - 10
E63	6 Series	03 - 10
E64	6 Series	03 - 10
E65	7 Series	02 - 08
E66	7 Series	02 - 08
E67	7 Series	02 - 08
E70	X 5	07 - 12

- Bush tool kit intended to assist the user in the removal and replacement of the Trunion bush on the rear axles of the following applications: BMW E38 | 39 | 52 | 60 | 61 | 63 | 64 | 66 | 67 | 70

K00453**FORD REAR SUSPENSION BUSH REMOVAL KIT | CUPS**

- A set of cups for use with K00345 - Press Frame for Bush | Ball Joint removal
- Cups are intended for the removal | insertion of suspension bushes on Ford vehicles: specifically Ford Ka (96-98), Fiesta (96-02), Puma (97-02) and Focus (98-05)
- Intended for use with K00345
- For further information please see instructions for MM 27018 – Rear Suspension Bush Removal Kit - Ford

FORD MONDEO SUSPENSION TOOL

Mondeo Mk IV Trailing Arm Bush Remover | Installer

K00500

- A self-contained tooling solution intended for the removal and accurate re-insertion of the front bush of the rear trailing arm of the above mentioned vehicle

Make	Model	Engine	Engine Code	Year
Ford	Mondeo	All engines	All engine codes	07-12
	Galaxy	All engines	All engine codes	06-12
	S-Max	All engines	All engine codes	06-13



REAR UPPER BUSH REMOVAL/REPLACEMENT TOOL

Range Rover | Range Rover Sport | Land Rover Discovery 3 and 4

K00260

- A bush tool set for use predominantly on Range Rover L322 (2003-2012)
- Aimed for the removal and accurate insertion of the above bush
- This tool can be used on the vehicle with the rear hub still attached to the vehicle
- **Applications:**
Range Rover L322 (2003-2012), Range Rover Sport (2005 Onwards), Land Rover Discovery 3 (2004-2009) and 4 (2009 Onwards)



REAR SUSPENSION BUSH TOOL | Range Rover

K00261

- A bush tool set aimed at use predominantly on Range Rover L322 (2000-2012) for the removal and accurate insertion of the above bush
- This tool can be used on vehicle with the rear hub still attached to the vehicle



K00262

LOWER ARM REAR SUSPENSION BUSH TOOL | Range Rover



- A bush tool set aimed at use predominantly on Range Rover L322 (2003-2012) intended for the removal and accurate insertion of the above bush
- This tool can be used on vehicle with the hub still attached to the vehicle

K00263

FRONT TRACK CONTROL ARM BUSH | Range Rover



- A bush tool set aimed at use predominantly on Range Rover L322 (2003-2012) intended for the removal and accurate insertion of the above bush
- This tool can be used on vehicle with the hub still attached to the vehicle

K00264

REAR SUSPENSION LOWER HUB BUSH TOOL

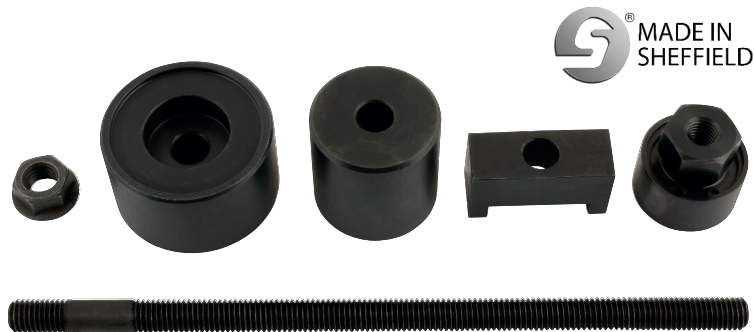
Range Rover | Range Rover Sport | Land Rover Discovery 3 and 4



- A bush tool set aimed at for use predominantly on Range Rover L322 (2003-2012) intended for the removal and accurate insertion of the bush on the applications listed
- This tool can be used on vehicle with the rear hub still attached to the vehicle
- Designed for lower hub bush
- **Applications:** Range Rover L322 (2003-2012), Range Rover Sport (2005 Onwards), Land Rover Discovery 3 (2004-2009) and 4 (2009 Onwards)

REMOVER | INSTALLER UPPER ARM FRONT BUSH - Range Rover**K00265**

- A bush tool set aimed at use predominantly on Range Rover L322 (2003-2012) intended for the removal and accurate insertion of the bush on the applications listed
- Designed to remove and refit the inner front suspension bush fitted on the rear suspension top arm with the minimum of dismantling required
- This tool can be used on vehicle with the rear hub still attached to the vehicle
- **Applications:** Range Rover L322

**FRONT LOWER ARM REAR BUSH TOOL**
Land Rover Discovery 3 | Range Rover Sport**K00266**

- A bush tool set aimed at use predominantly on the Range Rover L322 (2003-2012) for the removal and accurate insertion of the above bush
- This tool can be used on the vehicle with the rear hub still attached to the vehicle

**MERCEDES SPRINTER GENERATION 2 WHEEL BEARING KIT****K00581****DEVELOPMENT PROJECT**

- A bearing press tool aimed at use on the above applications
- Will be a mechanical press tool solution to allow use both on vehicle and without the facility for compressed air, electrical tools or hydraulic advantage
- **Applications:** Mercedes Sprinter (906), Vito (W639), Volkswagen Crafter (2E)

K00334

FRONT LOWER ARM REAR BUSH TOOL

Land Rover Discovery 3 | Range Rover Sport



- The K00334 has been developed to allow the user to remove and refit the rear bush of the front lower suspension arm fitted to Discovery 3 Land Rovers (2004-2009) and Range Rover Sport (2005 Onwards) with the minimum of dismantling required
- Being able to perform this task on the vehicle saves considerable time over the more traditional use of a workshop press that requires the arm to be completely removed or the considerable cost of complete arm replacement
- The K00334 has been designed to work with OEM Hydro bush RBX500291

K00623

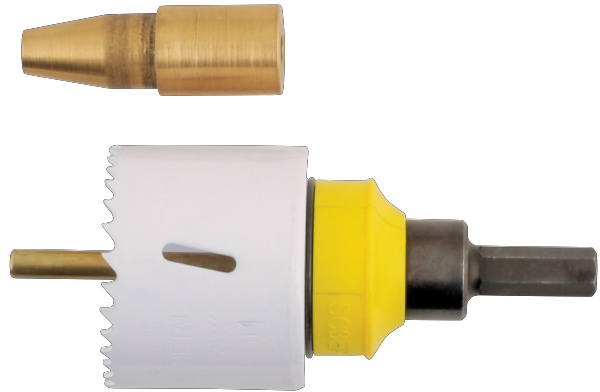
FRONT SUB-FRAME BUSH REMOVAL KIT - Nissan | Renault | Vauxhall



- The K00623 has been developed to replace the sub-frame bushes fitted to the Vivaro, Traffic and Primastar Van front sub-frame on vehicle
- Being able to perform this task on the vehicle saves considerable time over the more traditional use of a workshop press that requires the sub frame to be completely removed
- **Applications:** Renault Traffic, Nissan Primastar Van, Vauxhall Vivaro (2001-2013)
- Cutter and Bush Tool available separately as K00576 and K00566 respectively

FRONT SUB-FRAME BUSH CUTTER KIT - Nissan | Renault | Vauxhall

K00576



- The K00576 has been developed to allow the user to remove the raised outer ring of the bush fitted to the Vivaro, Traffic and Primastar Van front sub-frame. After cutting the outer ring off use Eldon Part No. K00566 to extract the remaining part of the bush
- **Applications:**
Renault Traffic, Nissan Primastar Van, Vauxhall Vivaro (2001-2013)
- Kit available as "complete solution" as Eldon Part No. K00623

FRONT SUB-FRAME BUSH REMOVAL TOOL Nissan | Renault | Vauxhall

K00566



- The K00566 has been developed to allow the user the remove and refit the front subframe mounting bushes found on the Vauxhall Vivaro, Renault Traffic and Nissan Primastar Vans on the vehicle
- Eldon recommends the use of K00576 Bush Cutter Kit to remove the raised outer ring of the bush
- Being able to perform this task on the vehicle saves considerable time over the more traditional use of a workshop press that requires the sub-frame to be completely removed

K00067

GENERATION 1 WHEEL BEARING SET



- Wheel bearing extraction on vehicle
- Suitable for use with ABS sensor and covers most vehicles (Universal). It is used where the bearing is a separate sealed unit, separate of the hub and drive flange
- Bearing sizes : 62 | 64 | 66 | 68 | 72 | 82 | 84mm
- **Applications:**
VAG, Mercedes-Benz, BMW, PSA, Renault

K00598

GENERATION 1 PRESS FRAME BEARING INSTALLER | REMOVER
Thrust Washer Set

- The K00598 kit has been designed to allow NON-GEN 2 wheel bearings to be extracted and inserted using a workshop press. The K00598 is recommended for use with the Eldon Tool K00271 Press Frame for effective support of the bearing housing/hub. A 16 piece kit providing specially machined Force Rings and Centralising spigots
- Simple to use - select the required Force Ring to Match the O/D of the bearing and combine with the Centralising Spigot that matches the I/D of the bearing
- Assemble the hub and extraction components on the press frame ensuring the assembly is secure and aligned. Eldon Tool recommends the use of K00271 Press Frame to support the hub in the workshop press
- **Applications Non Gen2 standard one piece bearings:** Audi | BMW | Citroën | Ford | Mercedes | Vauxhall | Opel | Peugeot | Seat | Skoda | Volkswagen
- Designed for bearings with any combination of the following sizes:
Internal diameter: 34 | 45 | 37 | 39 | 40 | 41 | 42 | 45mm
Outside diameter: 62 | 64 | 66 | 68 | 72 | 74 | 80 | 82 | 84mm

K00271

PRESS SUPPORT BLOCK

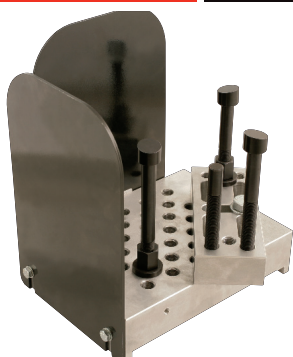


Image 1

- Designed to be used with a workshop press - Image 1
- Offers an adjustable and stable support base for vehicle hubs and other complicated shapes to allow bearings and bushes to be pressed out with ease -Image 2

UNIVERSAL BEARING & BUSH REMOVAL/INSTALLATION TOOL KIT

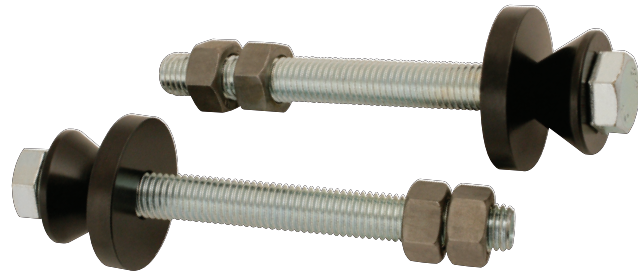
For Use With Press

K00606

- A tool set of cups aimed at use for the extraction and reinsertion of most popular bearing and bush sizes found in the automotive industry
- Kit provides an incremental range of working diameters between the following sizes
Internal diameters: 32-72
Outside diameters: 40-86
- Kit supplied with a thrust pad intended for compatibility with a standard workshop press
- Available as an on vehicle solution with centre screw and thrust nuts under K00384

**UNIVERSAL DUMMY DRIVE SHAFT WHEEL BEARING SUPPORTS****K00204**

- Two dummy drive shafts to allow most cars and light vans to be placed back on their wheels and rolled about without installing the drive shafts during long front end work
- Simple to install
- Holds the bearing and drive flange together to prevent damage
- Innovative British Design
- DO NOT TOW VEHICLE USING K00204

**INNER BEARING RACE PULLER SET****K00171**

- For extracting the inner bearing rings that remain on the wheel hub when removing the wheel bearing
- **Includes 4 collets:**
40-45mm | 45-50mm | 50-55mm | 55-61mm
- **Applications:** Audi | BMW | Ford | Mercedes Benz | Peugeot | Renault | Toyota | Volkswagen



K00254**MASTER GLOW PLUG REMOVAL SET**

- A glow plug removal set for removing most varieties of glow plugs on most popular applications
- Set allows for both removing a complete glow plug unit, and a broken glow plug that is stuck in the head and re-profile after removal.
- This kit is available as two subsidiary sets K00255 & K00256 to allow the user to select which group of components they require

K00167**GLOW PLUG REMOVAL SET**

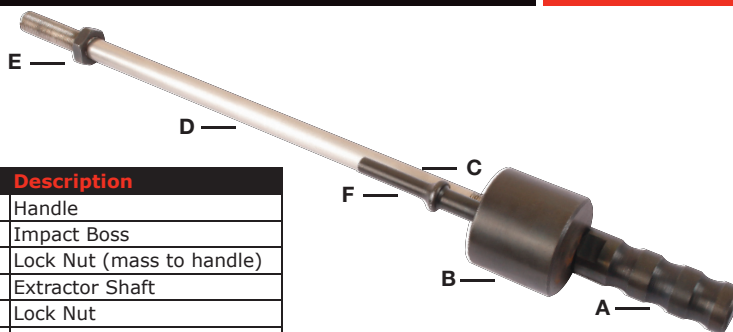
Comprehensive Glow Plug Removal Set Aimed at a Variety of Engines



- A glow plug removal set for removing damaged and broken glow plugs from cylinder heads, specifically where they have sheared off just under the hex flush with the cylinder head
- Kit includes components to remove and debris from the glow plug aperture before re assembly
- Components available as part of master set K00254

AIR HAMMER EXTRACTOR

K00107



- Air hammer extractor adaptor for the removal of diesel injectors/bushes etc
- Allows effective transmission of impact force and vibration to any adaptor with a 5/8" thread
- Offers an effective means of extraction for stuck diesel injectors (adaptors available separately)
- Use with Eldon adaptors - **Part No. K00657**

ID	Description
A	Handle
B	Impact Boss
C	Lock Nut (mass to handle)
D	Extractor Shaft
E	Lock Nut
F	Impact Punch

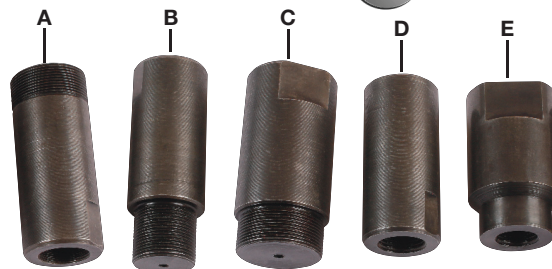
AIR HAMMER ADAPTOR SET - 5PC

K00657



- For use with the air hammer extractor - **Part No. K00107** or with any slide hammer with 5/8" thread
- Injector threads external: M25 (Siemens), M20 (Denso), M27 (Siemens)
- Injector threads internal: M12 (to fit older style injectors equipped with an M12 high pressure pipe union on the top of the injector), M14 (Delphi)

ID	Thread	Description
A	M25	Siemens injectors
B	M20	Denso injectors (Nissan etc)
C	M27	Siemens injectors
D	M12	Older style injectors equipped with an M12 high pressure pipe union on the top of the injector
E	M14	Internal - Delphi



GLOW PLUG APERTURE CLEANER - M12

K00575



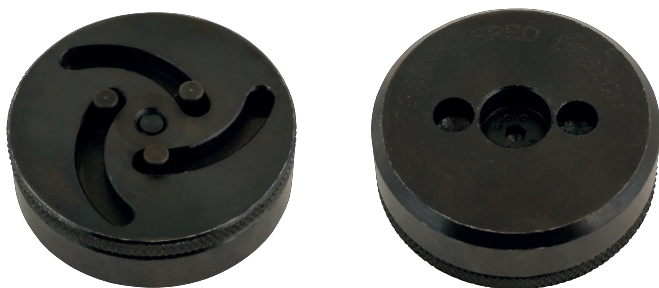
- This tool offers an adjustable cleaning solution for M12 glow plug apertures
- Used prior to fitting replacement plugs to prevent carbon build

K00218**BRAKE REWIND BASE SET - Generation 1 | No Adaptors**

- Customer specific brake rewind set supplied with no adaptors
- Adaptors supplied separately compliment this kit upon customer request

K00539**LEFT HAND & RIGHT HAND BRAKE REWIND SCREW ASSEMBLY**

- Universal LH and RH brake rewind force screw with 3/8" square drive and hexagon on either end
- Supplied with no adaptors but will fit all current 3/8" drive adaptors

K00562**ADJUSTABLE EPB BRAKE ADAPTOR - 3 Pin | 2 Pin Drive**

- Used in conjunction with appropriate electronic park brake reset equipment where required and adaptor drive system, the 3 pin adjustable wind back adaptor with 2 pin drive allows new pads to be fitted the EPB systems on the below vehicles
- Applications include some models of the following makes: Audi | BMW | Iveco | Renault | Range Rover | Seat | Volkswagen | Volvo (Please see reverse for full application list)

ADJUSTABLE 3 PIN EPB BRAKE ADAPTOR - 3 Pin | 3/8"D**K00515**

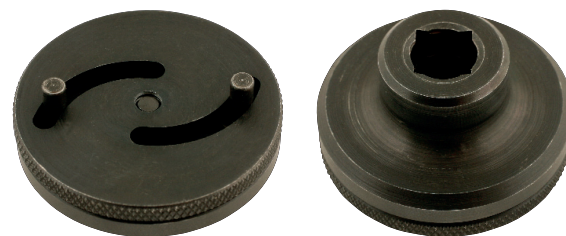
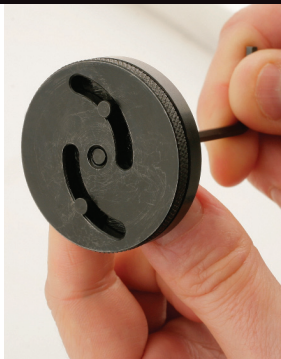
- Three pin adjustable brake rewind adaptor of the same conceptual design as K00270 (two pin), intended to cover the below above applications
- Universal brake adaptor with three pin drive
- This adaptor is intended to be an alternative to the known two pin adaptors which Eldon currently produce
- Registered design
- **Applications:** BMW F series EPB | VAG EPB | Iveco Daily| Renault Grand Scenic

**UNIVERSAL BRAKE REWIND ADAPTOR WITH TWO PIN DRIVE****K00467**

- Adjustable brake adaptor with two pin drive
- Can be used on 100s of cars to cover the majority of applications which Eldon's fixed pin adaptors cover - in one tool
- Universal brake rewind adaptor derived from, and developed under P00159
- Available with 3/8" square drive under K00270
- Registered design

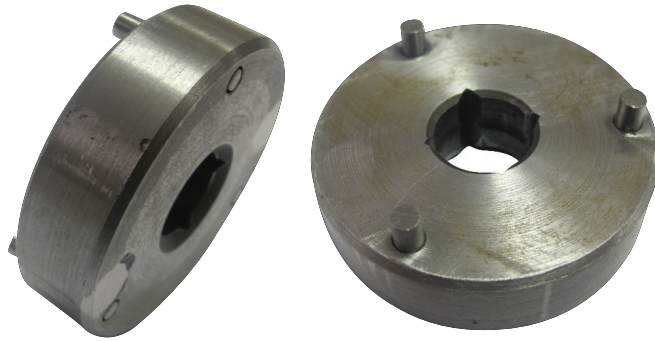
**MULTI DRIVE BRAKE ADAPTOR - Adjustable****K00270**

- Adjustable brake adaptor with 3/8" drive
- Can be used on 100s of cars to cover the majority of applications which Eldon's fixed pin adaptors cover - in one tool
- Universal brake rewind adaptor derived from, and developed under P00159
- Available with 2 pin drive under K00467
- Registered design



K00127

BRAKE PISTON WIND BACK ADAPTOR 3 PIN VAG (EPB)



- VAG EPB 3 pin brake piston wind back adaptor aimed at winding the brake piston back into the calliper casing during brake pad replacement procedures
- Brake rewind drive screw assemblies sold separately
Eg: K00218, K00539
- **Warning:**
This tool can be used AFTER and electronic device has been used to switch off and set up the EPB System

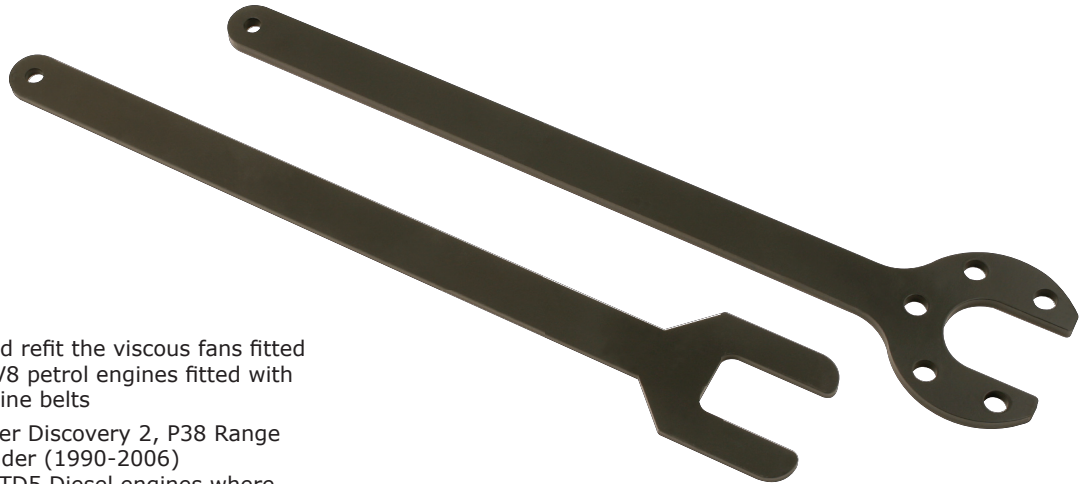
K00176

BRAKE CALIPER SERVICE SET



- A set of 14 special brake piston adaptors which enable the controlled retraction of brake pistons when replacing brake pads on most common applications
- Can be used on 100s of cars
- Includes two types of retraction nut and screw assembly which allows for both left handed and right handed rewind
- This set is available as two adaptor tools (K00270 & K00515) and a singular drive system (K00539) but is supplied in this fixed pin format to allow for simple and easy tool box storage

VISCOUS FAN REMOVAL TOOLS - LAND ROVER

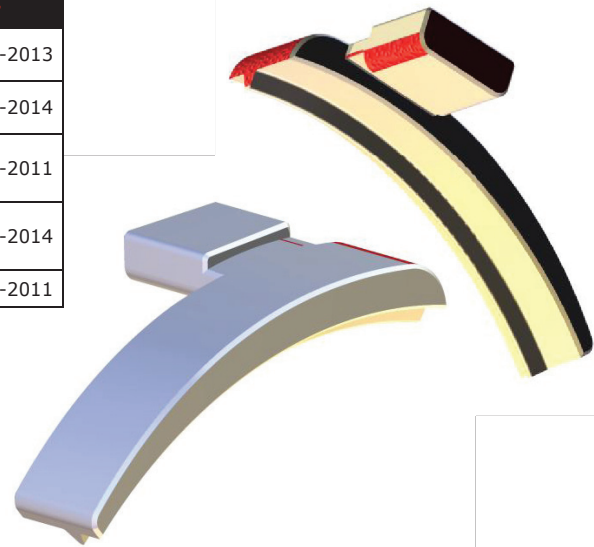
K00353


- Developed to remove and refit the viscous fans fitted to Land Rover TD5 and V8 petrol engines fitted with flat type multi-V serpentine belts
- **Applications:** Land Rover Discovery 2, P38 Range Rover, Land Rover Defender (1990-2006)
Engines: V8 Petrol and TD5 Diesel engines where fitted with Multi-V serpentine belts

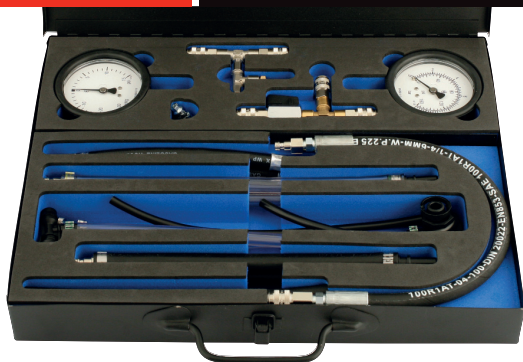
ACCESSORY DRIVE BELT INSTALLATION TOOL - FORD

K00154

Make	Model	Engine	Engine Code	Year
Ford	Fiesta	1.25 Duratec 16v	SNJA, SNJB, STJA, STJB, F8JA, F8JB, FUJA, FUJB, M7JA, M7JB	2002-2013
	Fiesta, Focus, Fusion, Puma	1.4 Duratec 16v	SPJC, SPJA, SPJC, FXJA, FXJB, FXJC, FXDA/C, FXDB/D, ASDA, ASDB,	2000-2014
	Fiesta, Focus, Fusion, Puma, Cmax	1.6 Duratec 16v	FYJA, FYJB, HWDA, HWDB, SHDA, SHDB, SHDC	2002-2011
	Fiesta, Cmax, Focus, Mondeo, Grand Cmax,	1.6 Duratec 16v Ti-VCT	HXJA, HXJB, RVJA, U5JA, IQJA, HXDA, HXDB, SIDA, IQDA, IQDB, PNDA, XTDA, MUDA, KGBA, PNBA, RHBA	2004-2014
	Cmax, Focus	1.8 Duratec	Q7DA	2005-2011



- A one piece tool intended to the non destructive installation of the (air conditioning) auxiliary drive belt on ford engines (2002-2014)

K00169**FUEL PRESSURE TESTER (CRD) | Petrol**

- Developed as a cost effective solution to test the fuel pressure of low pressure petrol fuel injection systems
- Set is intended to have connectivity with the following fuel lines:

Applications: PSA 10mm, BMW, VAG & Renault 8mm Diesel, Renault 8mm side connecting fixings & all vehicles fitted with Schrader valve fittings

K00583**FUEL PRESSURE TEST KIT – CUSTOMER SPECIFIC**

- Developed as a cost effective solution to test the fuel pressure of low pressure petrol fuel injection systems
- Intended as a customer specific solution as kit is supplied with no engine adaptor pipes
- Pipes to be sourced from following 'SE' number listings

The following parts are intended as a customer specific optional extra to K00583

Part No.	Description	Manufacturer
SE10780	Schrader Valve Assembly	
SE10871	10mm Pressure Tester Hose Kit	PSA
SE10872	8mm Pressure Tester Hose Kit	Renault
SE10873	Petrol Tester Hose Kit	Renault S Type
SE10901	Diesel Adaptor Pipes	GM Vauxhall/Opel
SE10902	Diesel Adaptor Pipes	Ford
SE10903	Diesel Adaptor Pipes - Small	Renault Fiat GM
SE10904	Diesel Adaptor Pipes - Large	Renault Fiat GM

Schrader Valve Assembly

A pair of fuel pressure tester pipes aimed at all applications with Schrader valve style valve connections on the low pressure fuel lines

Pressure Tester Hose Kits

A pair of fuel pressure tester pipes aimed at all applications with 10mm PSA style valve connections on the low pressure fuel lines

Diesel Adaptor Pipes (Large and Small)

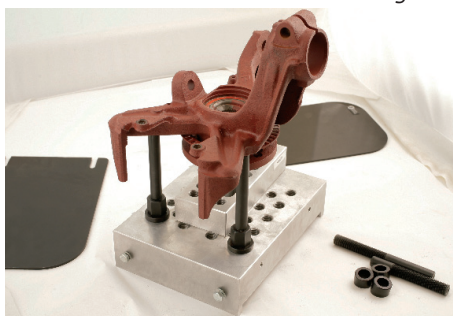
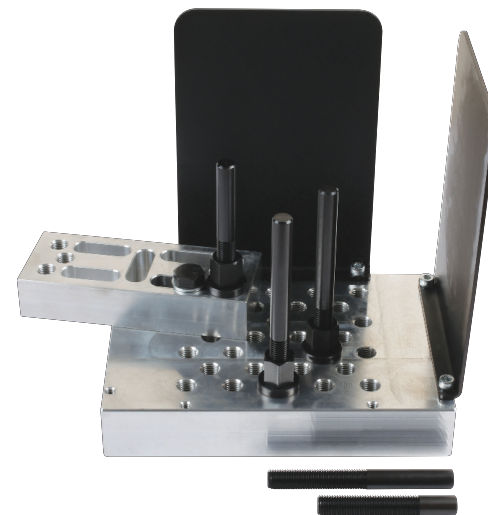
A pair of fuel pressure tester pipes aimed at all applications with GM/Vauxhall – Opel diesel style valve connections on the low pressure fuel lines

WINDOW WRENCH - BMW MINI COOPER**K00496**

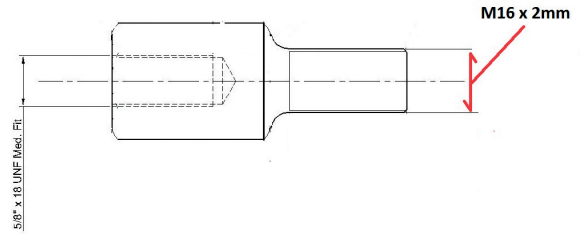
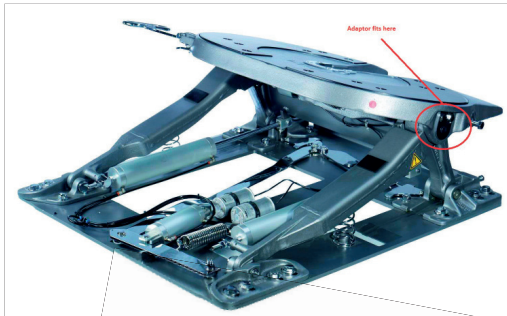
Make	Model	Engine Code	Year
Bmw Mini	Cooper	W10B14A	2002-2006
	Cooper R50	W10B16BA	2002-2003
	Cooper S R53	W11B16AA	2002-2003
	Cooper R50	W10B16BA	2002-2006
	Cooper S R53	W11B16AA	2002-2006
	JCW Hardtop R53	N14B16CD	2005-2006
	Cabrio R52	W11B16AA	2005-2008
	Cabrio S R52	W11B16AA	2005-2008
	JCW Cabrio R52	W11B16AA	2005-2008



- A hook wrench with guide rails intended to fit the star bolts which retain the glass to the window mechanism on the above vehicles
- This wrench fits between the door glass and the exterior seal to loosen or tighten the bolts to remove or reinstall and adjust the door glass

**PRESS SUPPORT BLOCK****K00271***Image 1**Image 2*

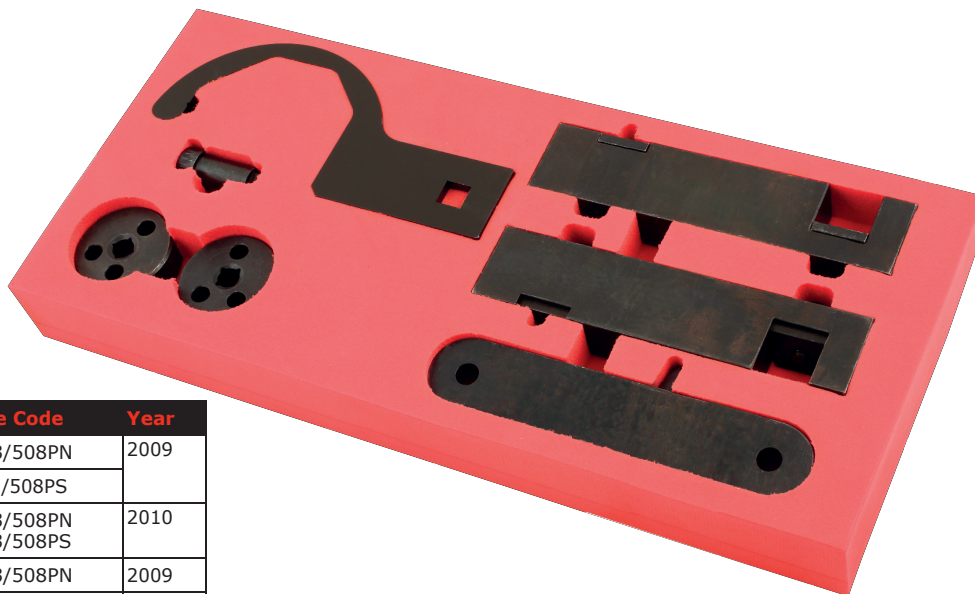
- Designed to be used with a workshop press – Image 1
- Offers an adjustable and stable support base for vehicle hubs and other complicated shapes to allow bearings and bushes to be pressed out with ease – Image 2

K00549**HGV 5TH WHEEL PIVOT PIN PULLER ADAPTOR**

- This tool has been designed to screw into the main pivot pin on the fifth wheel to allow its extraction using any slide hammer equipped with a 5/8" UNF thread

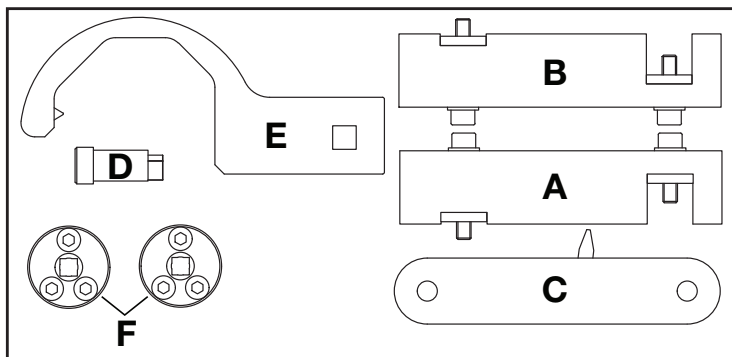
K00194**UNIVERSAL WHEEL LOCK BRAKE (800 LONG)**

- Universal wheel lock brake to fit any vehicle with wheel studs / bolts of less than 18mm diameter



Make	Model	Engine Code	Year
Jaguar	XF	AJ-133/508PN	2009
	XFR	AJ-133/508PS	
	XJ	AJ-133/508PN AJ-133/508PS	2010
	XK8	AJ-133/508PN	2009
	XKR	AJ-133/508PS	2011
Land Rover	Discovery 4	508PN	2009
	Range Rover	508PN 508PS	
	Range Rover Sport	508PN 508PS	

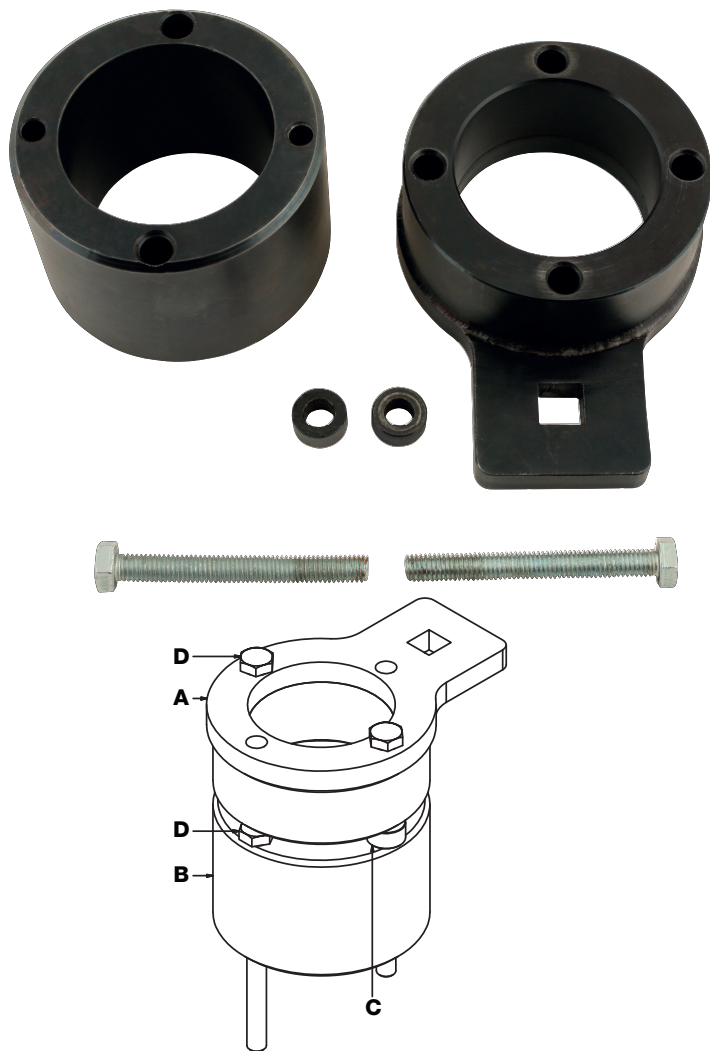
ID	Part No.	OEM Ref.	Description
A	E10007	303-1445-1	Cam Locking Block Type 1
B	E10008	303-1445-5	Cam Locking Block Type 2
C	E10010	303-1448	Flywheel Locking Pin
D	E10009	303-1447	Crankshaft Locking Pin
E	E10736	303-1482	Pre-tensioning Wrench
F	E10738	303-1452	2 x Camshaft Rotating Tools



- K00072 provides the required timing tools to lock the camshafts and crankshaft on the post 2010 V8 5.0L petrol engines used in the Jaguar and Land Rover ranges
- The K00072 engine timing tool kit is a 7 piece kit which includes the camshaft, crankshaft, flywheel locking tools and the special camshaft turning tools and tensioning wrench required to work on the engines listed

K00486

CRANKSHAFT PULLEY HOLDING TOOL JAGUAR | LAND ROVER



Make	Model	Size	Engine Code	Year
Jaguar	Sovereign	4.2	BC	1997-2003
			LB	2001-2003
			LC	1997-2003
	S-Type	4.0	GB	2001-2002
			GC	1999-2002
	XJ8	3.2	AC	1997-2003
			KB	2001-2003
			KC	1997-2003
		4.0	BC	1997-2003
			DC	1997-2003
			LB	2001-2003
			LC	1997-2003
			MA	2000-2003
			MB	2001-2003
			DC	1997-2003
	XJR		MA	2000-2003
			MB	2001-2003
	XK8		CC	1996-2002
			CE	1996-2002
	XKR		NC	1999-2002
			EC	1998-2002
			PA	2000-2002
	S-Type	4.2	PB	2001-2002
			HB	2002-2008
	XJ8	3.5	1B	2002-2008
			RB	2003-2010
		4.2	SB	2003-2010
			TB	2004-2010
			2003-2010	
XJR			2B	2002-2006
XK8			3B	2002-2006
XKR			PC	2003-2006
XK8		4.0	NB	2001-2002
XF		4.2	HG	2008-2009
XK8		5G	2006-2009	
XKR			2007-2009	
XF		9G	2006-2009	
		1G	2008-2009	
Land Rover	Discovery 3	4.4	448PN	2004-2009
	Range Rover	4.2	428PS	2005-2009
		4.4	448PN	2005-2009
	Range Rover Sport	4.2	428PS	2005-2009
4.4		448PN	2005-2009	

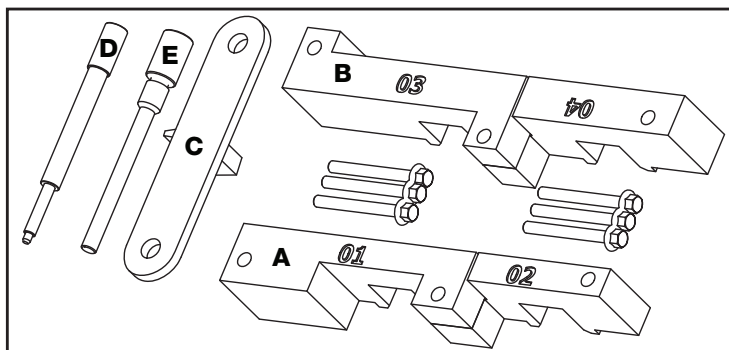
ID	Part No.	OEM Ref.	Description
A	E10007	303-191 (LRT-12-080)	JLR Front Pulley Holding Tool
B	E10614 01	303-191-03 (18G 1437-2)	Crankshaft Pulley Adaptor Boss
C	E10600	303-191-04	Spacer Bush
D	SSM8070		Hex-head Bolt M8 x 70 (x 2)

- K00486 provides the required components to hold the crankshaft vibration damper (crankshaft pulley) still while undoing the often very tight pulley mounting bolt found on the Jaguar and Land Rover vehicles listed.
- **Description:** 5 piece kit designed to be used with a 1/2"D breaker bar.



Make	Model	Engine Code	Year (from)
Range Rover	3.6	368DT	2006
Range Rover Sport	3.6	368DT	2006

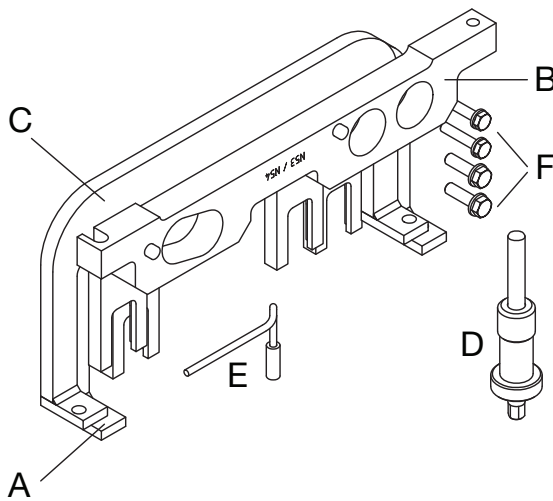
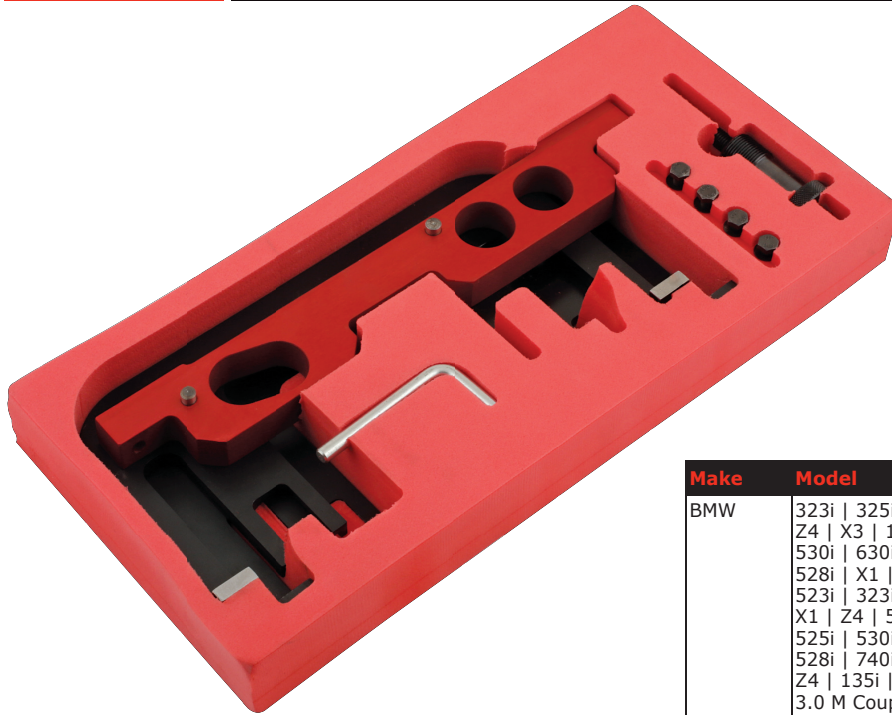
ID	Part No.	OEM Ref.	Description
A	E10783 05	303-1236	Camshaft Alignment Block
B	E10783 06	303-1236	Camshaft Alignment Block
C	E10606	303-1243	Land Rover V8 Flywheel Locking Plate
D	E10604	303-1239	Camshaft Rotating Pin
E	E10605	303-1238	Crankshaft Timing Pin



- The K00488 kit has been designed to allow the user to lock the camshafts and crankshaft in their timed position for engine rebuilds and timing chain replacement on the Land Rover 3.6 V8 Diesel engine.
- **Description:** the K00488 comes with 7 main components made up of 2 pairs of camshaft locking blocks, a crankshaft locking pin, flywheel holding pin and a camshaft turning tool.

K00089

BMW 2.3 | 2.5 | 2.8 | 3.0 6 Cylinder (N51 | N52 | N53 | N54)



Make	Model	Size	Engine Code
BMW	323i 325i 523i Z4 X3 130i 330i 530i 630i 730i 528i X1 125i Z4 523i 323i 530i, 630i X1 Z4 523i 325i 525i 530i 630i 330i 528i 740i X6 Z4 135i 335i 3.0 M Coupe	2.3	N52 B25A N52 B25AE N52 B25AF N52 B25BE N52 B25O1 N52 B25O2 N52 B30A N52 B30AF N52 B30O2 N52 B30U1 N52K B25A N52K B25A/O1 N52K B25AE N52K B25U1 N52K B30A N52K B30A/O1 N52K B30AE N52K B30AF N53 B25A N53 B30A N53 B30A/O0 N53 B30UO N54B30A N54 B30A/AA N54 B30A/TO N54 B30TO
		2.5	
		2.8	
		3.0	

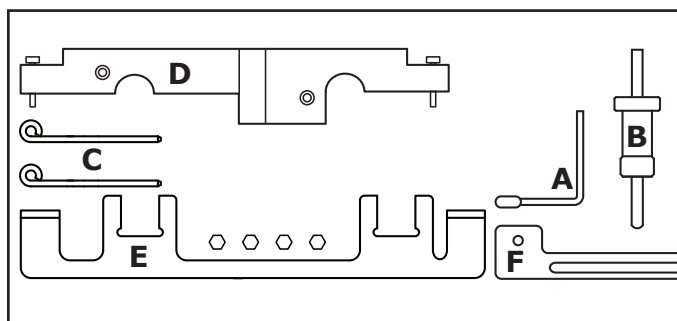
ID	Part No.	OEM Ref.	Description
A		11 4 280, 11 4 281 11 4 282, 11 4 283	Camshaft Alignment Tool (N51, N52 only)
B		11 4 290, 11 8 520	Camshaft VANOS Sensor Alignment Tool
C		11 4 280, 11 4 281, 11 4 283	Camshaft Alignment Tool (N53, N54 only)
D		T10171	Timing Chain Pre-tensioning Tool
E		11 9 340, 11 9 341	Flywheel/Crankshaft Alignment Pin
			Fixing Bolts and Washers

- A specifically designed kit for the N51 | N52 | N53 | N54 engines.
- Intended to assist the procedure of removal and replacement of the engine timing chain.

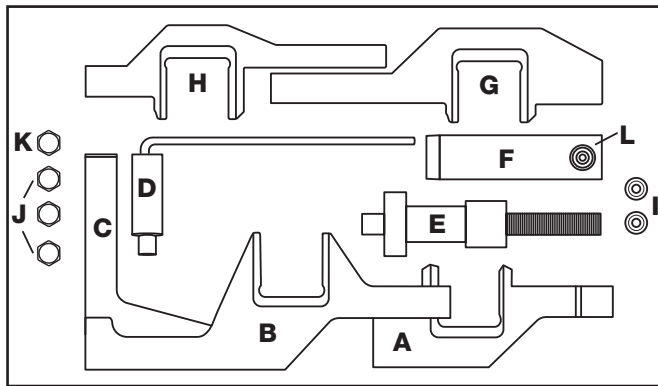


Make	Model	Size	Engine Code	Year
BMW	1 Series	1.6 116i	N43 B16A/AA	2007-08
	1 Series	1.6 116i	N43 B16AA	2009-10
	1 Series	2.0 116i	N43 B20K0	2009-12
	1 Series	2.0 116i	N43 B20K0	2008-12
	1 Series	2.0 118i	N43 B20AY	2006-13
	1 Series	2.0 120i	N43 B20A	2006-13
	1 Series	2.0 120i	N43 B20A	2006-13
	1 Series	2.0 120i	N43 B20AA	2007-13
	3 Series	1.6 316i	N43 B16AA/O0	2007-11
	3 Series	2.0 318i	N43 B20AY	2007-11
	3 Series	2.0 318i	N43 B20U0	2010-13
	3 Series	2.0 320i	N43 B20A	2007-13
	3 Series	2.0 320i	N43 B20A/AA	2007-13
	5 Series	2.0 520i	N43 B20A	2007-10

ID	Part No.	OEM Ref.	Description
A	23048-13	11 5 120	Flywheel Locking Tool
B	23048-14	11 9 340 (11 9 341/11 9 342)	Timing Chain Tensioner
C	23048-12	11 3 340	Chain Tensioner Locking Pins x 2
D	E10412	11 8 710 (11 8 711/11 8 712)	VANOS Sensor Alignment Tool
E	E10411	11 8 690 (11 8 691/ 11 8 692/11 8 693)	Camshaft Locking Tool
F	E10413	11 8 700	Balance Shaft Locking Tool



- A set of important tools for locking the engine in the correct orientation whilst timing/re-timing the N43 series of engines.
Aimed at 2006- current chain driven engines only.

K00186**BMW N12 | N14 Engines**

Make	Model	Size	Engine Code	Year
BMW	Mini One		N12B14AB	2007-2010
	Mini Cooper		N12B16A	2006-2010
	Mini Cooper S	1.6	N14B16A	2007-2010

ID	Part No.	OEM Ref.	Description
A	MM 23048 27	11 9 540	Camshaft Alignment Tool Item 1 of 2
B	MM 23048 26A	11 9 540	Camshaft Alignment Tool Part 2A of 2
C	MM 23048 26B	11 9 540	Camshaft Alignment Tool Part 2B of 2
D	MM 23048 24	11 9 590	Crankshaft Setting Pin
E	MM 23048 14		Timing Chain Pre-tensioning Tool Assembly
F	MM 23048 23	11 9 552	Support Clamp
G	MM 23048 22	11 9 551	Camshaft Alignment Plate (119 550/ 551) Exhaust
H	MM 23048 21	11 9 550	Camshaft Alignment Tool (119 550/551) Inlet
I	FSSH5012		Shank Bolt M5 (2)
J	SSM6X30		M6 x 30 Long Setscrew (3)
K	SKTM6X30		Socket Head Cap Screw M6 x 30 Long
L	MM 23164 24		M6 x 20 Long Setscrew

- BMW Mini and Peugeot have developed a pair of new engines; the N12 and N14 ranges incorporate the latest technologies to give the best performance, economy and emissions possible.
- This kit has been designed to allow the replacement of the timing chain on those engines and to allow the camshaft and crankshaft to be locked in position so that the camshaft timing can be correctly checked.

NISSAN - DIESEL PUMP LOCKING PIN

K00104

**Applications:**

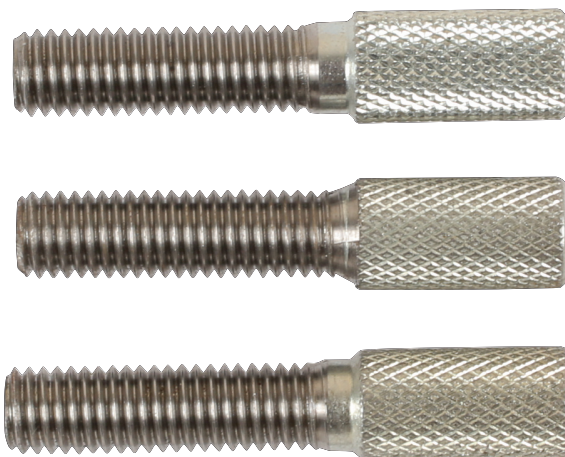
Nissan diesel 2.5 | 2.2 fitted to Almera | Almera Tino | Cabstar | Navara | Pathfinder | Primera | X-Trail.

OEM Ref KV11106030

- Fuel Pump Sprocket Locking Tool. Diesel pump locking pin for Nissan 2.2 | 2.5 engines.

THREADED LOCKING PINS MAZDA | SUZUKI

K00582

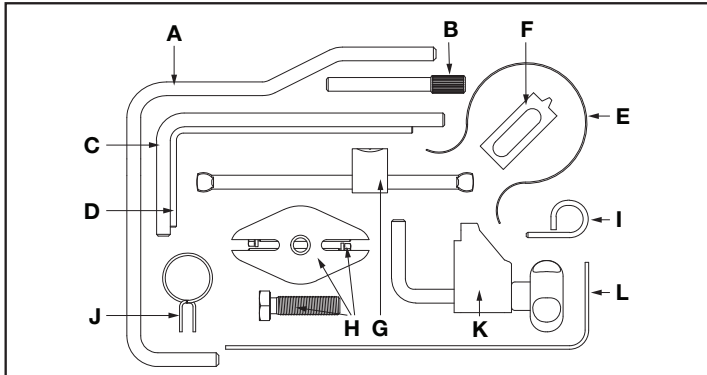


Make	Model	Size	Engine Code	Year
Suzuki	Vitara	2.0TD	RS	1995-02
Mazda	6	2.0TD	MZR-CD (RF Turbo)	2002-05

- These specialist pins go into the injection pump sprocket. This allows you to slacken the tensioner bolt and to push the tensioner away from the belt which in turn allows the removal of the guide pulley and timing belt.

K00128

PEUGEOT | CITROËN | FIAT 2.0 | 2.2 Diesel



ID	Part No.	OEM Ref.	Description
A		0188Y	Crankshaft Locking Pin (8mm)
B		0188M	Camshaft Locking Pin
C		0188X	Flywheel Locking Pin
D		0188Q1	Auxiliary Drive Belt Tensioner Locking Pin (4mm)
E		0188K	Cambelt Retaining Clip
F		0188F	Flywheel Holding Tool
G		0188J2	Cambelt Tensioner Tool
H		0188P	Crankshaft Pulley Puller/Extractor
I		0153AL/4200TA	Cambelt Tensioner Locking Pin
J		0188AH	Crankshaft Pulley Centralisation Tool
K		0188AD	Cambelt Clamp
L		0188Q2	Auxiliary Belt Tensioner Locking and Crank Pinion Alignment Tool (see instructions)

Make	Model	Size	Engine Code	Year
Citroën	C4	2.0	DW10ATED4 DW10JATED4 DW10BTED/ L3 DW10ATD DW10TD DW10ATED DW10BTED DW10UTD DW10TD DW10CTED4	2004-2012
	C5			1999-2012
	C8			2002-2012
	DS4			2011-2012
	Berlingo			1999-2007
	Dispatch			1999-2012
	Jumpy			1999-2012
	Relay			1999-2012
	Synergie			1999-2007
	Evasion			1999-2007
	Xantia			1998-2001
	Picasso			1999-2007
	Picasso			2006-2011
	Grand Picasso			2006-2011
	Peugeot			Expert
Boxer		1999-2006		
206		1999-2006		
306		1999-02		
307		2001-2009		
406		1999-2004		
407		2004-2011		
308		2007-2012		
607		2000-2011		
806		1999-2002		
807		2005-2010		
508		2011-2012		
3008		2009-2012		
5008		2009-2012		
RCZ		2010-2012		
Fiat	Ulysse	2.0		2003-2011
	Scudo			2004-2012
	Ducato			2001-2006
Citroën	C-Crosser	2.2	DW12MTED4 DW12BTED4 DW12TED4/L4 DW12UTED DW12ATEDL/L4 DW12CTED4 4HK 4HL 4HN 4HP 4HR 4HS 4HT 4HW 4HX 4HY 4HZ	2007-2012
	C5			2000-2009
	C6			2007-2011
	C8			2001-2010
	Relay			2002-2006
	Jumper			2002-2006
Peugeot	406	2.2		2000-2006
	407			2005-2011
	508			2011-2012
	607			2000-2009
	807			2007-2010
	4007			2007-2010
Boxer	2002-2006			
Fiat	Ulysse	2.2		2002-2011
	Ducato			2006-2012

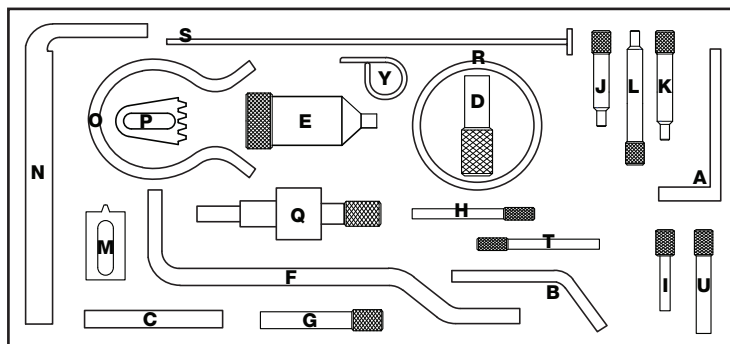
- The DW10 engine range has a 2.0L capacity (1999-) and has SOHC and DOHC.
- The twin cam systems have one camshaft driven by the cambelt and the other shaft driven by a chain in the head.
- The DW12 range is 2.2L (2001-)



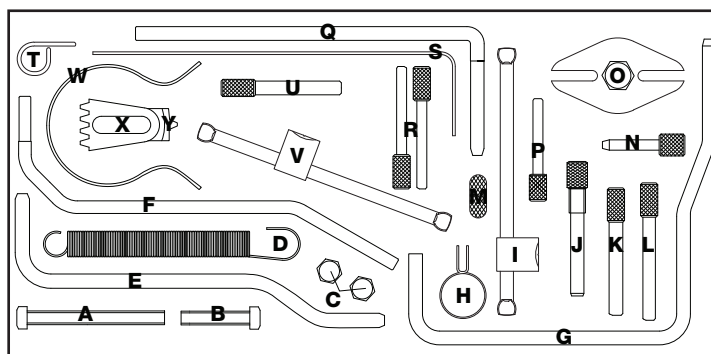
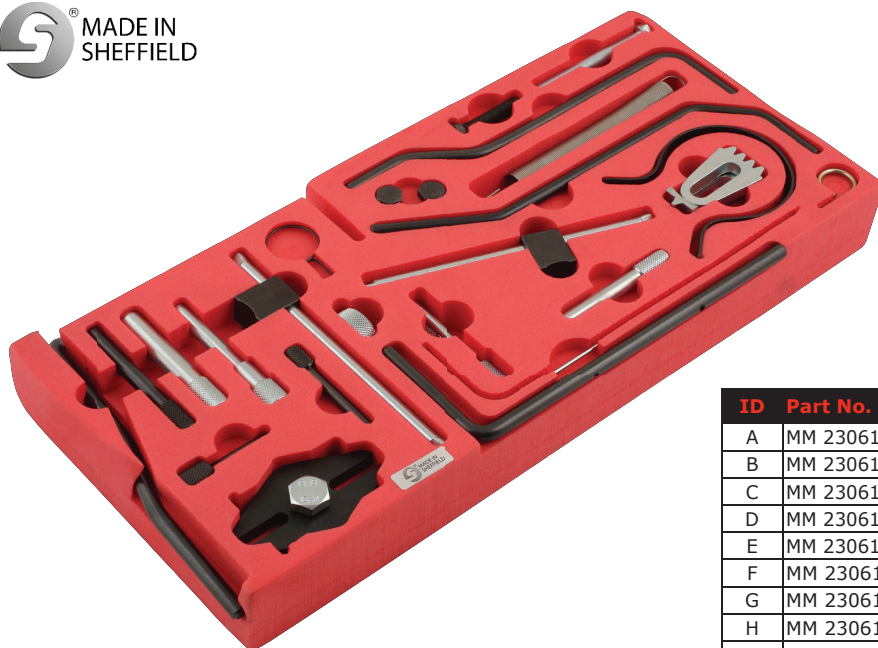
Make	Model	Engine Code	Year
PSA	206	TU1JP (HFY) TU1JP (HFZ)	1998-2005
	106, 206, 306, 307, 1007, Partner, Partner Origin, Ranch I, Ranch II	TU3JP (KFX) TU3JP/FL4 (KFX) TU3JP/L3 (KFX) TU1A (HFX) TU1JP (HFX) TU3A (KFW) TU3JP (KFW) N43 B16AA/OO	1997-2012
	106, 206, 306	TU5JP (NFZ) TU5JP/L3 (NFZ) TU5JP/Z (NFZ)	1993-1999
	207, 307, 307CC, 308, 1007, Partner, Partner Origin, Ranch I, Ranch II	TU5JP (NFZ) TU5JP/L3 (NFZ) TU5JP/Z (NFZ)	2001-2011
	206, 406, 406 Coupe, 607	EW10J4 (RFR)	1998-2007
	807	EW10J4/L5 (RFN)	2002-2005
	206, 307, 307CC	EW10J4S (RFK)	2002-2009
	406	EW10D (RLZ)	2000-2004
	206, 206CC, 307, 307CC, 406, 406 Coupe, 607, 806, 807, Expert I, Expert II	EW10J4 (RFN) EW10J4/L5 (RFN)	2000-2007
	406, 407	EW7J4 (6FZ)	2000-2006
	406, 407, 607, 807	EW12J4 (3FZ) EW12J4/L5 (3FZ)	1999-2009
	407, 407 Coupe, 607, 807	EW12J4 (3FY)	2004-2009



ID	Part No.	OEM Ref.	Description
A	MM 23053 1X		Tensioning Tool
B	MM 23055 01X		Crankshaft Locking Pin
C	MM 23055 02X		Camshaft Alignment Pin
D	MM 23055 05X		Crankshaft Locking Pin
E	MM 23055 06X		Crankshaft Locking Tool
F	MM 23061 02X		Crankshaft Locking Pin
G	MM 23069 25Z		Camshaft Alignment Pin
H	MM 23069 33X		Camshaft Alignment Pin
I	MM 23069 34X		Camshaft Alignment Pin
J	MM 23069 36X		Camshaft Alignment Pin
K	MM 23069 37X		Camshaft Alignment Pin
L	MM 23069 38Z		Camshaft Alignment Pin
M	MM 23069 46Z		Flywheel Locking Tool
N	MM 23069 51		Tension Wrench
O	MM 23069 53X		Belt Retention Clip
Q	MM 23111 02A		Flywheel Locking Tool
R	MM 23061 12X		Crankshaft Setting Pin
S	MM 23061 14		Tensioner Adjuster
T	MM 23061 15Z		Tension Gauge
U	MM 23069 04Z		Locking Pin
V	E10095 02		Crankshaft Setting Pin



- A comprehensive set of engine timing tools aimed at PSA petrol engines comprising of a set of important tools for locking the engine in the correct orientation and adjustment of critical components to assist the timing/retiming of the above applications.
- Suitable for the following engine sizes: 1.0 | 1.1 | 1.4 | 1.6 | 1.8-16v | 2.0 | 2.0-16v | 2.2 | 2.2-16v

K00142**PSA Diesel**

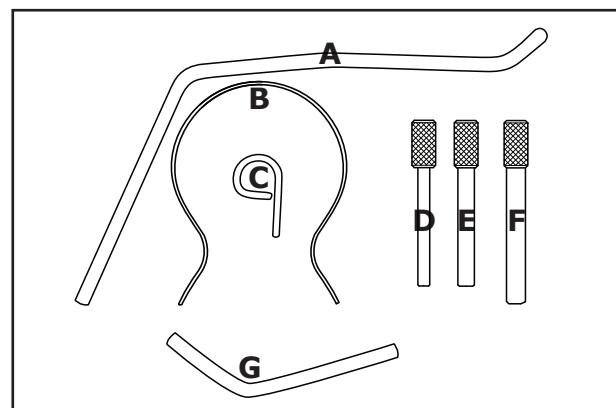
ID	Part No.	OEM Ref.	Description
A	MM 23061 09Z		H.T. Setscrew M8 x 80
B	MM 23061 04A		Setscrew M8 x 40mm
C	MM 23061 03A		Setscrew M8 x 35mm
D	MM 23061 11B		Retention Spring
E	MM 23061 02X		Cranked Setting Pin
F	MM 23061 06X		Crankshaft Timing Pin
G	MM 23061 07X		Crankshaft Pin
H	MM 23061 24		Centraliser Spring - 1.4mm Dia.
I	MM 23069 44A		Tension ADJ. Tool
J	MM 23069 23Z		Locking Pin
K	MM 23060 11Z		Flywheel Locking Pin
L	MM 23069 33X		Locking Pin
M	MM 23101 01Z		Tensioning Tool
N	MM 23069 34X		Camshaft Locking Pin
O	MM 23069 57		Puller Beam
P	MM 23069 07X		Setting Pin
Q	MM 23061 11A		Crank Lock Pin
R	MM 23069 04Z		Setting Pin 5mm
S	E10095 01		2mm Formed Locking Pin
T	E10095 02		3mm Formed Locking Pin
U	MM 23069 25Z		Locking Pin
V	MM 23069 49A		Tension ADJ. Tool
W	MM 23069 53X		Timing Belt Retaining Clip
X	MM 23111 02A		Flywheel Holding Tool
Y	MM 23069 46Z		Flywheel Lock

- A comprehensive set of engine timing tools aimed at PSA diesel engines comprising of important tools for locking the engine in the correct orientation and for adjustment of critical components to assist the timing/re-timing of the above applications.



Make	Model	Engine Code	Year
Citroën	Berlingo 1.4	KFU (ET3JP4), KFU (TU3JP), KFW	2001-2011
	C2, C3,C3 Pluriel 1.4	KFU (ET3JP4), KFU (TU3JP)	2002-2010
	Nemo	KFU (ET3JP4), KFU (TU3JP)	2008-2010
	C4 16v 1.4	KFU (ET3JP4), KFU (TU3JP)	2004-2011
Peugeot	206	KFU (ET3J4), KFU (TU3JP), KFW (TU3JP)	2003-2008
	207	KFU (ET3J4), KFU (TU3JP), KFW (TU3JP)	2005-2011
	307	KFU (ET3J4), KFU (TU3JP), KFW (TU3JP)	2003-2008
	1007	KFU (ET3J4), KFU (TU3JP), KFW (TU3JP)	2006-2011
	Bipper	KFU (ET3J4), KFU (TU3JP), KFW (TU3JP)	2008-2010

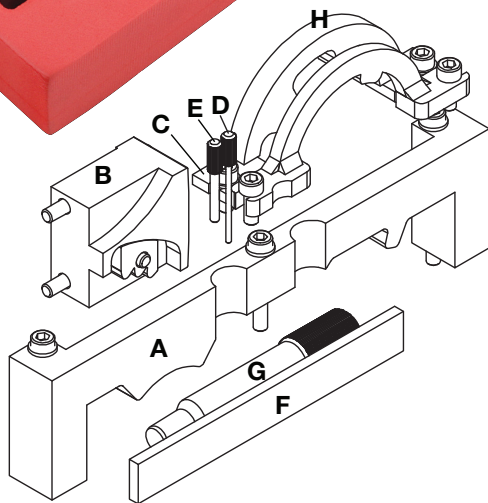
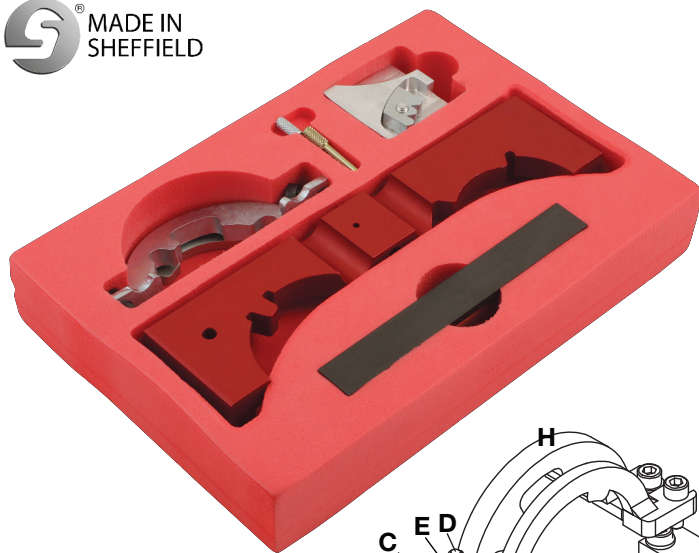
ID	Part No.	OEM Ref.	Description
A	E10232	4507-TA 0132QY	Flywheel Timing Pin 6mm dia. long
B	23069-53	4533-TAD 0132-AK 0188K 0153AK 0189K	Timing Belt Clip
C	E1095-02	3mm pin	Tensioner Pin
D	23069-04	0178D 0194A 0132AB 4527-TS2 5711-TD	Camshaft Locking Pin (Inlet 16v) 5mm dia
E	23069-25	4533-TAC1 0132-AJ1 0189B 0187B 0188M 0194B	Camshaft Locking Pin (Exhaust 16v) 8mm dia
F	23055-02	0132RZ 4507-TB	Camshaft Locking Pin (8 Valve Engine) 10mm dia
G	23055-01	4507-TA 0132QY	Flywheel Locking Pin 6mm dia. short



- This kit has been developed to offer the required engine locking tools to fit the current generation of popular PSA 1.4 belt driven 16v and 8v petrol ET3 engines.

K00188

VAUXHALL/OPEL A10 | A12 | A14 | Z10 | Z12 | Z14

MADE IN
SHEFFIELD

ID	Part No.	OEM Ref.	Description
A	E10562	EN-49977-100	Camshaft Sensor Disc Setting Tool
B	E10329	EN-49977-200	Inlet Camshaft Adjuster Tool
C	E10565	EN-49978	Camshaft Sensor Locating Tool
D	32164-15Z	KM-955-1	Chain Tensioner Pin
E	23164-16Y	KM-955-2	Belt Tensioner Pin
F	23164-11EX	KM-953-A	Camshaft Locking Plate
G	23164-12A	KM-952	Crankshaft Locking Pin
H	23164-14Z	KM-954	Camshaft Sensor Disc Tool

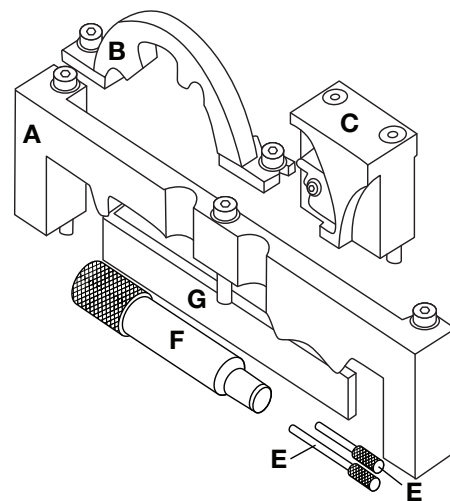
Make	Model	Size	Engine Code	Year
Vauxhall/Opel	Astra-H	1.2	Z12XEP	2005
	Corsa-D	1.0	Z10XEP	2006
	Corsa-D	1.2	Z12XEP	2006
	Corsa-D	1.4	Z14XEP	2006
	Adam	1.2	LWD	2012
	Adam	1.4	L2Z	2012
	Adam	1.4	LDD	2012
	Ampera	1.4	LUU/A14XFL	2011
	Astra-J	1.4	LDD/A14XEL	2009
	Astra-J	1.4	LDD/A14XER	2009
	Astra-J	1.4	LUJ/A14NEL	2011
	Astra-J	1.4	LUJ/A14NET	2009
	Corsa-D	1.0	A10XEP	2009
	Corsa-D	1.2	A12XEL	2009
	Corsa-D	1.2	A12XER	2009
	Corsa-D	1.4	A14XEL	2009
	Corsa-D	1.4	A14XER	2009
	Corsa-D	1.4	A14NEL	2012
	Insignia	1.4	LUJ/A14NET	2011
	Meriva-B	1.4	LDD/A14XER	2010
	Meriva-B	1.4	LUH/A14NEL	2010
	Meriva-B	1.4	LUJ/A14NET	2010
	Mokka	1.4	LUJ/A14NET	2012
	Zafira-C Tourer	1.4	LUJ/A14NEL	2011
	Zafira-C Tourer	1.4	LUJ/A14NET	2011
	Astra-G Classic II	1.2	Z12XE	2003
	Astra-G Classic II	1.4	Z14XEP	2003
	Astra-G	1.4	Z14XEP	2003
	Astra-H	1.4	Z14XEL	2004
	Astra-H	1.4	Z14XEP	2004
	Combo	1.4	Z14XEP	2005
	Combo-C	1.2	Z12XEP	2004
	Combo-C	1.4	Z14XEP	2004
	Corsa-C	1.0	Z10XE	2000
	Corsa-C	1.0	Z10XEP	2003
	Corsa-C	1.2	Z12XE	2000
	Corsa-C	1.2	Z12XEP	2004
	Corsa-C	1.4	Z14XEP	2003
	Meriva-A	1.4	Z14XEP	2004
	Tigra-B	1.4	Z14XEP	2004
	Aveo	1.2	L2Q/A12XEL	2011
	Aveo	1.2	LDC/A12XER	2011
	Aveo	1.2	LWD/A12XEL	2011
	Aveo	1.4	LDD/A14XEL	2011
	Aveo	1.4	LDD/A14XER	2011

- Designed to lock the cam and crankshafts in position to allow the removal and replacement of the timing chain fitted to the Vauxhall/Opel twin cam engines.

Make	Model	Size	Engine Code	Year
Vauxhall/Opel	Adam	1.2	LWD	2005
	Adam	1.4	L2Z	2006
	Adam	1.4	LDD	2006
	Ampera	1.4	LUU/A14XFL	2006
	Astra-J	1.4	LDD/A14XER	2012
	Astra-J	1.4	LDD/A14XEL	2012
	Astra-J	1.4	LUJ/A14NEL	2012
	Astra-J	1.4	LUJ/A14NET	2011
	Astra-J	1.4	LUJ/A14NET	2009
	Corsa-D*	1	A10XEP	2009
	Corsa-D	1.2	A12XEL	2011
	Corsa-D	1.2	A12XER	2009
	Corsa-D	1.2	A12XER	2009
	Corsa-D	1.4	A14XEL	2009
	Corsa-D	1.4	A14XER	2009
	Corsa-D	1.4	A14NEL	2009
	Insignia	1.4	LUJ/A14NET	2009
	Meriva-B	1.4	LDD/A14XER	2012
	Meriva-B	1.4	LUJ/A14NET	2011
	Meriva-B*	1.4	LUH/A14NEL	2010
	Mokka	1.4	LUJ/A14NET	2010
	Zafira-C Tourer	1.4	LUJ/A14NEL	2010
	Zafira-C Tourer*	1.4	LUJ/A14NET	2012
	Aveo	1.2	L2Q/A12XEL	2011
	Aveo	1.2	LDC/A12XER	2011
	Aveo	1.2	LWD/A12XEL	2003
	Aveo	1.4	LDD/A14XEL	2003
	Aveo*	1.4	LDD/A14XER	2003



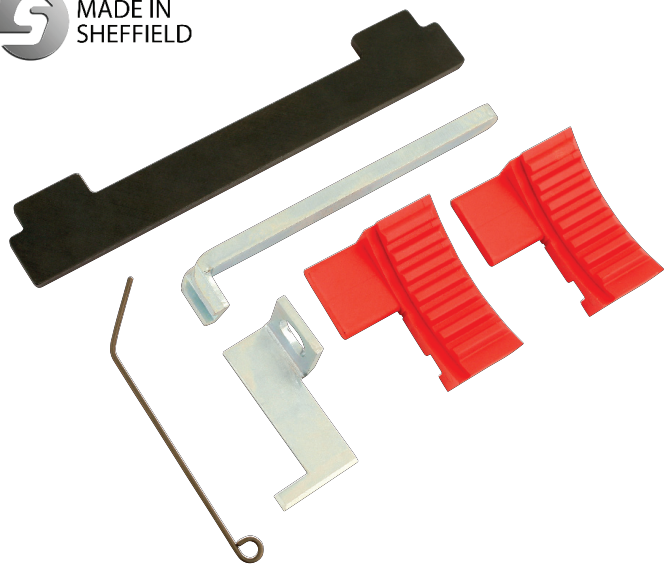
ID	Part No.	OEM Ref.	Description
A	E10562	EN-49977-100	Camshaft Sensor Disc Setting Tool
B	E10329	EN-49977-200	Inlet Camshaft Adjuster Tool
C	E10565	EN-49978	Camshaft Sensor Locating Tool
D	32164-15Z	KM-955-1	Chain Tensioner Pin
E	23164-16Y	KM-955-2	Belt Tensioner Pin
F	23164-11EX	KM-953-A	Camshaft Locking Plate
G	23164-12A	KM-952	Crankshaft Locking Pin



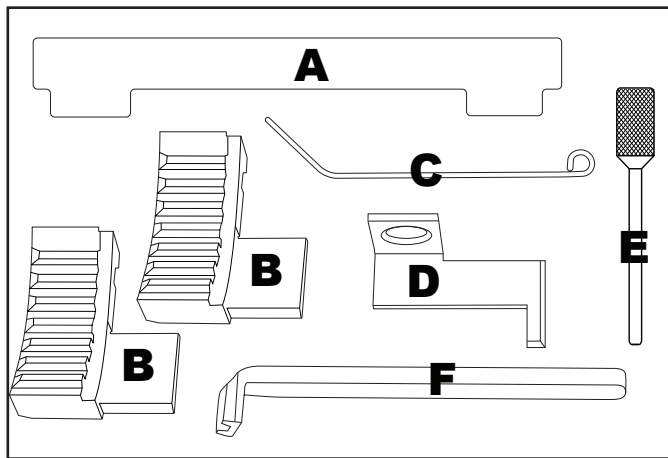
- This kit has been developed to offer the required engine locking tools to fit the current generation of popular PSA 1.4 belt driven 16v and 8v petrol ET3 engines.

K00207

VAUXHALL/OPEL



Make	Model	Engine Code	Year
Alfa Romeo	156	939A4.000	2005-2010
Chevrolet	Aveo	1.4 G14D, LDD//1.6	2008-2011
	Cruze	LXV(F16D4)//1.8 2HO(Z18XER)	2009-2012
	Orlando		2011-2012
Fiat	Croma	939A4.000	2006-2011
GM Vauxhall	Corsa		2007-2012
	Astra-G	1.6 Z16LEL Z16LER	2003-2006
	Astra-H	Z16LET Z16XE1	2004-2012
	Meriva-A	Z16XEP	2006-2010
	Zafira-B	Z16XER A16XER	2001-2012
	Vectra-C	1.8 Z18XER	2006-2008
	Signum	A18XER 2HO/A18XEL	2006-2008
	Insignia		2008-2011



ID	Part No.	OEM Ref.	Description
A	E10290	KM 6628-A 2 000 012 000	Camshaft Locking Bar
B	23058-04	KM 6340 2 000 012 100	Camshaft Pulley Locking Tool (2 part)
C	23058-05	KM 6333	Tensioner Locking Pin
D	E10230	KM 6625 2 000 012 800	Fly Wheel Holding Tool
E	23174-01	KM 6349 KM 6130	Locking Pin
F	23164-04	KM 911	Flywheel holding tool

- Engine timing tool kit for Vauxhall | Opel 1.6 | 1.8 16v Z series engines.

FORD TRANSIT 2.2 TDCi

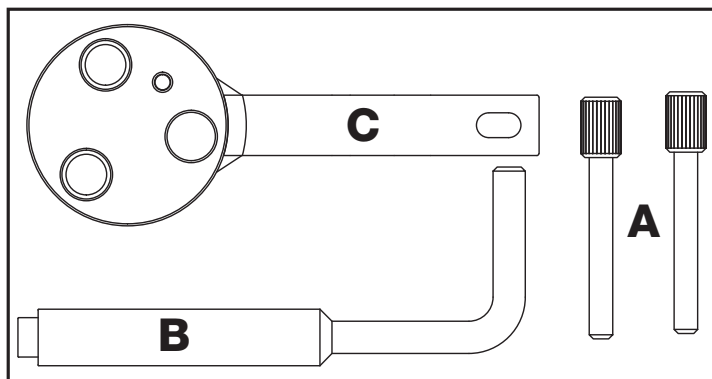
K00193



Make	Description	Size	Engine Code	Start year
Ford Transit	TDCi	2.2	CYFA	2011
	TDCi	2.2	CYFB	2011
	TDCi	2.2	DRFA	2011
	TDCi	2.2	DRFB	2011
	TDCi	2.2	P8FA	2006
	TDCi	2.2	P8FB	2006
	TDCi	2.2	PGFA	2008
	TDCi	2.2	PGFB	2008
	TDCi	2.2	QVFA	2006
	TDCi	2.2	QWFA	2006
	TDCi	2.2	SRFA	2008
	TDCi	2.2	SRFB	2008
	TDCi	2.2	SRFC	2008
	TDCi	2.2	SRFD	2008
	TDCi	2.2	SRFE	2008
	TDCi	2.2	UHFA	2011
	TDCi ECONetic	2.2	CYFC	2011
	TDCi ECONetic	2.2	DRFC	2011
	TDCi HDT	2.2	USRA	2011



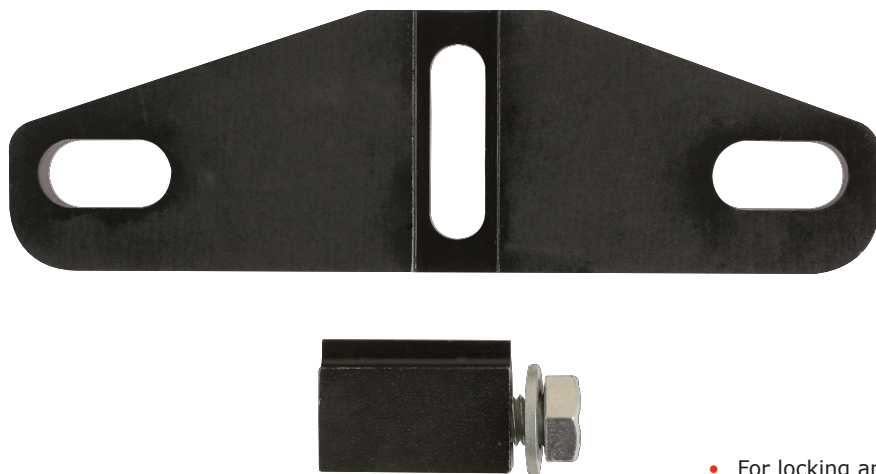
ID	Part No.	OEM Ref.	Description
A	MM 23069 07X		Camshaft Timing Pins 6mm (2)
B	MM 23060 14Z	303-698 21-251	Crankshaft (Flywheel End) Alignment Pin
C	E10506	303-1587	Crankshaft Sprocket Locking Tool



- This kit has been developed specifically for the chain driven 2.2 common rail diesel engines fitted in the Ford Transit from around 2006 with the engine numbers listed above.

K00212**CRANKSHAFT TIMING PIN FORD 1.0 GDi**

- Threaded timing pin for holding the crankshaft in position on Ford 1.0 GDi engines.
- Included in **Part No. K00217** - Engine Timing Tool Kit.

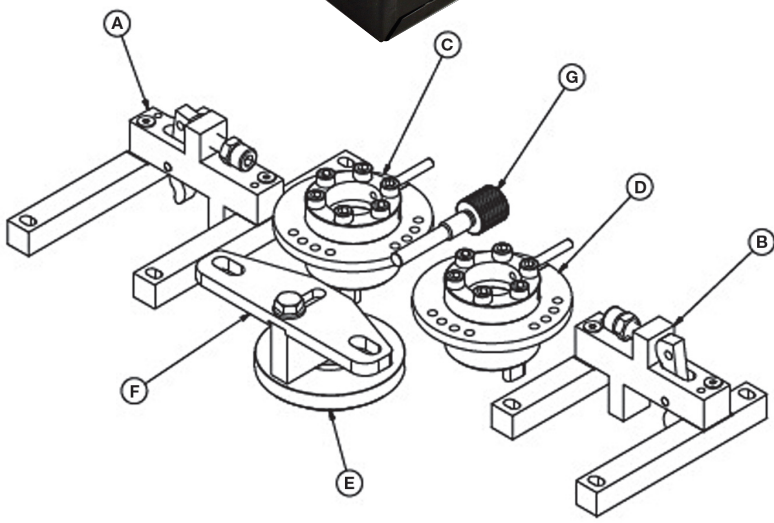
K00213**FLYWHEEL LOCKING TOOL FORD 1.0 GDI**

- For locking and holding the flywheel in the correct orientation whilst timing Ford 1.0 GDi engines.
- Included in **Part No. K00217** - Engine Timing Tool Kit.

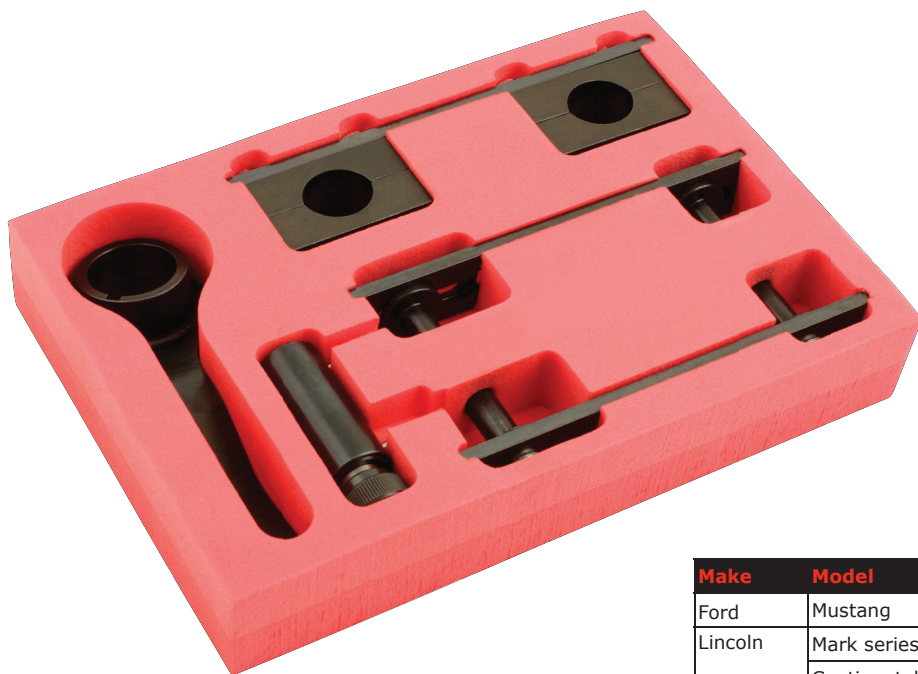


Make	Model	Size	Year
Ford	Focus	1.0 SCTi EcoBoost	2012

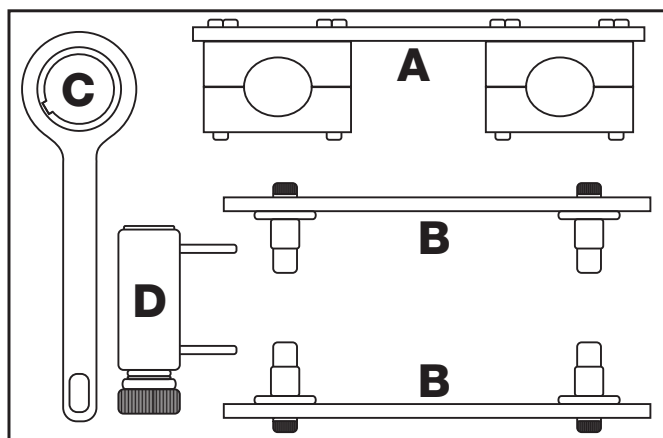
ID	Part No.	OEM Ref.	Description
A	E10320	1908	Camshaft Locking Tool
B	E10321	1105 1/2	Camshaft Locking Tool
C	E10340	1909	VCT Locking Tool Inlet
D	E10346	1106	VCT Locking Tool Exhaust
E	E10274	303 1603	Oil Seal Installer
F	E10349	303 1604	Flywheel Locking Tool
G	E10348	303 1602	Crankshaft Timing Pin



- Comprehensive timing tool kit for Ford 1.0 SCTi EcoBoost engines. These tools are used to set the correct timing, align the camshafts and assemble the VCT units in the TDC position without play.

K00276**FORD 4.6L V8 (4 Valve)**

Make	Model	Size	Engine Code	Year
Ford	Mustang	4.6L V8 (4v)	H R V Y	1996-2004
Lincoln	Mark series	4.6L V8 (4v)	H R V Y	1993-1998
	Continental	4.6L V8 (4v)	H R V Y	1996-2004
Mercury	Marauder	4.6L V8 (4v)	H R V Y	2003-2004

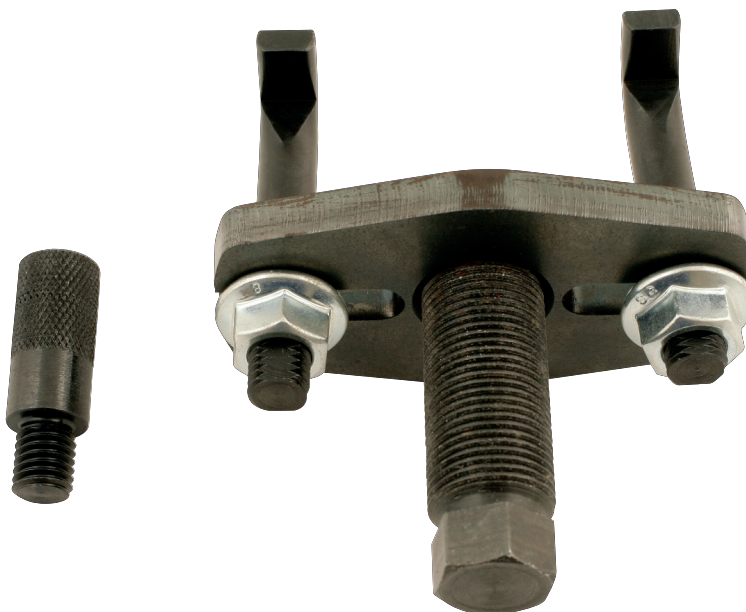


ID	Part No.	OEM Ref.	Description
A	E10290	303-446 T93P-6256-AHR	Camshaft Holding Tool Assembly
B	23058-04	303-445 T93P-6256-A	Camshaft Positioning Tool
C	23058-05	303-448 T93P-6303-A	Crankshaft Positioning Tool Assembly
D	E10230	303-447	Secondary Timing Chain Tensioning Tool

- Pre 2004 Ford V8 4.6L engines are tough units, designed for power and endurance. Unfortunately as the age of these vehicles increases and with it their mileage, these engines may require more maintenance and more involved overhaul procedures.
- It is for this reason that we have decided to produce a camshaft/crankshaft holding and positioning set which includes a secondary timing chain pre tensioning tool.

DIESEL PUMP SPROCKET PULLER | FORD TRANSIT

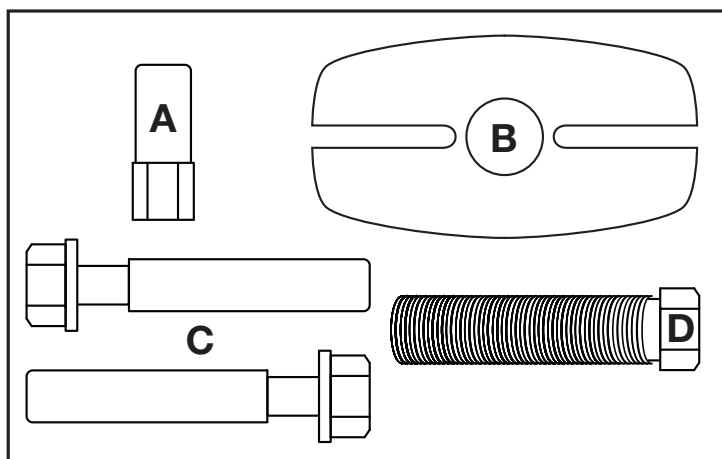
K00286



Applications: 2.2 TDCI (Puma) Diesel engine in Ford Transit from 2011

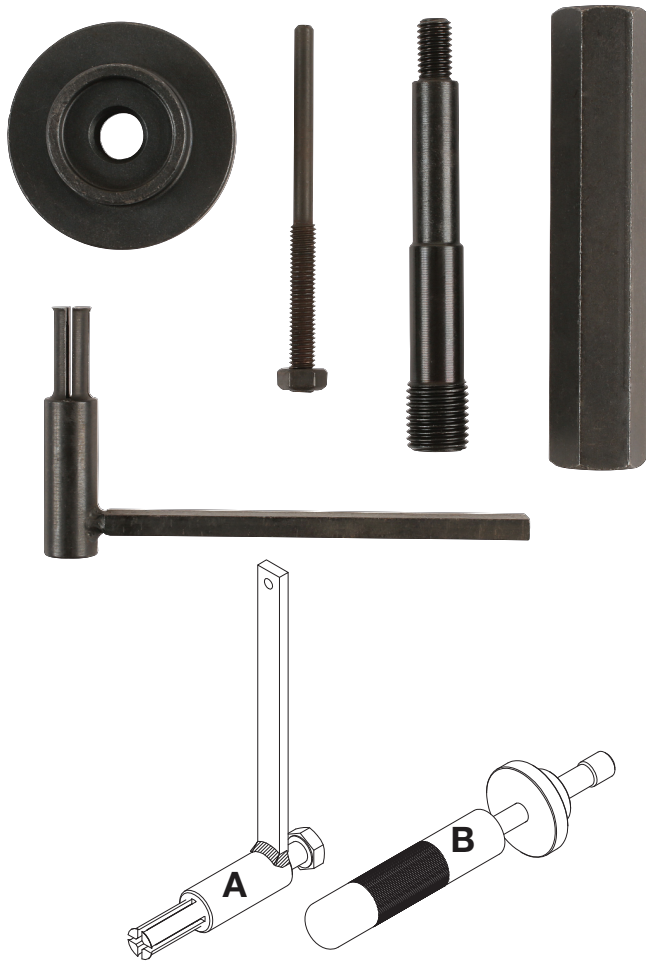
ID	Part No.	OEM Ref.	Description
A	23270-01	303-249-01	Centre location plug for diesel pump shaft
B	23270-04	303 249	Puller Beam
C	23270-05	303-249-01	Fuel pump puller hooked legs x 2
D	23162-82	303-249-01	Puller force screw

- As of 2011 Ford changed the method of fuel pump sprocket removal on the 2.2 TDCI (Puma) diesel engines. The sprocket no longer has threaded holes which means the legs of the puller used to remove the sprocket must be hooked in shape.
- The K00286 puller allows the removal of these sprockets by allowing the High Pressure diesel injection pump to be pushed out of the pump sprocket to enable pump removal without disturbing the timing chain.



K00303

FORD 1.8 TD | TDCi



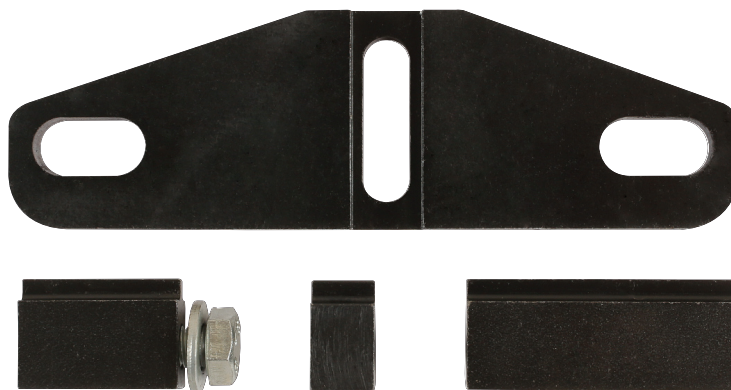
ID	Part No.	Description
A	E10490 01	Pump Pulley Holding Tool
B	E10494	Front Cover Alignment Tool

- These two tools are required to assist in the removal of the diesel pump drive chain used on the popular 1.8 TDDi engines.
- To fully remove the pump drive chain it is necessary to remove the camshaft drive belt and for this additional tooling will be required. Eldon recommend the use of **Part No. K00305**.

Make	Model	Size	Engine Code
Ford	C-MAX	1.8 TDCi	BHPA
Ford	C-MAX	1.8 TDCi	HCPA
Ford	C-MAX	1.8 TDCi	KKDA
Ford	Courier	1.8 Turbo	C9DC
Ford	Courier	1.8 Turbo	RTN/RTQ
Ford	Courier	1.8 Turbo	RTP
Ford	Fiesta	1.8 Turbo	C9DC
Ford	Fiesta	1.8 Turbo	RTN/RTQ
Ford	Fiesta	1.8 Turbo	RTP
Ford	Focus	1.8 TDCi	KKDA
Ford	Focus	1.8 TDCi	KKDB
Ford	Focus	1.8 TDCi	F9DA/B
Ford	Focus	1.8 TDCi	FFDA
Ford	Focus	1.8 TDDi	BHDA/B
Ford	Focus	1.8 TDDi	C9DA/B
Ford	Focus	1.8 TDDi	C9DC
Ford	Focus C-MAX	1.8 TDCi	BHPA
Ford	Focus C-MAX	1.8 TDCi	HCPA
Ford	Focus C-MAX	1.8 TDCi	KKDA
Ford	Galaxy	1.8 TDCi	FFWA
Ford	Galaxy	1.8 TDCi	QYWA
Ford	Mondeo	1.8 TDCi	FFBA
Ford	Mondeo	1.8 TDCi	KHBA
Ford	Mondeo	1.8 TDCi	QYBA
Ford	Mondeo	1.8 TDCi EConetic	KHBA
Ford	S-MAX	1.8 TDCi	FFWA
Ford	S-MAX	1.8 TDCi	QYWA
Ford	Tourneo Connect	1.8 TDCi	HCPA
Ford	Tourneo Connect	1.8 TDCi	HCPB
Ford	Tourneo Connect	1.8 TDCi	P7PA
Ford	Tourneo Connect	1.8 TDCi	P9PA
Ford	Tourneo Connect	1.8 TDCi	P9PB
Ford	Tourneo Connect	1.8 TDCi	R2PA
Ford	Tourneo Connect	1.8 TDCi	R3PA
Ford	Tourneo Connect	1.8 TDCi	RWPA
Ford	Tourneo Connect	1.8 TDCi	RWPC
Ford	Tourneo Connect	1.8 TDDi	BHPA
Ford	Transit Connect	1.8 TDCi	HCPA
Ford	Transit Connect	1.8 TDCi	HCPB
Ford	Transit Connect	1.8 TDCi	P7PA
Ford	Transit Connect	1.8 TDCi	P9PA
Ford	Transit Connect	1.8 TDCi	P9PB
Ford	Transit Connect	1.8 TDCi	R2PA
Ford	Transit Connect	1.8 TDCi	R3PA
Ford	Transit Connect	1.8 TDCi	RWPA
Ford	Transit Connect	1.8 TDCi	RWPC
Ford	Transit Connect	1.8 TDDi	BHPA

FLYWHEEL LOCKING TOOL FORD 1.8 TD | TDCi

K00305

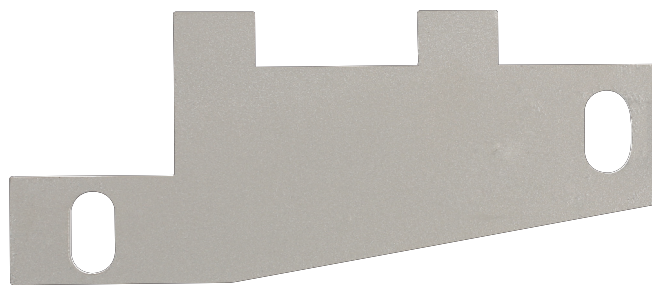


Applications: B-MAX, C-MAX, Fiesta, Focus, Fusion, Galaxy, Ka, Kuga, Maverick, Mondeo, Puma, Ranger, Scorpio, S-MAX, Streetka, Tourneo Connect, Transit, Transit Connect, Transit Custom

- For locking and holding the flywheel in the correct orientation whilst timing Ford 1.8 TD | TDCi engines.

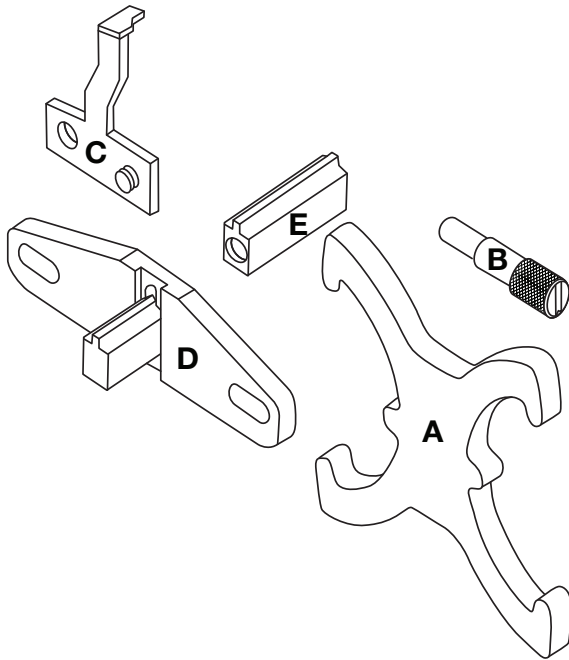
OIL PUMP ALIGNMENT TOOL FORD | LAND ROVER

K00309



Make	Model	Size	Year
Ford	Mondeo	2.0L Duratorq-DI (Puma) Diesel	2000-2007
	Ranger	2.0L Duratorq-TDCi (Puma) Diesel	2011 onwards
	Transit	2.0L Duratorq-TDCi (Puma) Diesel	2000 onwards
		2.0L Duratorq-TDDi (Puma) Diesel	2000 onwards
	Transit Custom	2.0L Duratorq-TDDi (Puma) Diesel	2012 onwards
Jaguar	400	2.2L Duratorq-TDCi (Global Puma) Diesel	2001-2009
		Stage V Diesel	
		2.2L Duratorq-TDCi (Puma) Diesel	
		2.4L Duratorq-DI (Puma) Diesel	
		2.4L Duratorq-TDCi (Puma) Diesel	
		3.2L Duratorq-TDCi (Puma) Diesel	

- This tool allows the oil pump in 4 cylinder diesel and some petrol engines to be removed and re-fitted in the same position.

K00306**FORD | VOLVO** EcoBoost

Make	Model	Size	Engine Code	Year
Ford	Galaxy	2.0	TNWA	2010
	Galaxy	2.0	TNWB	2010
	Galaxy	2.0	TPWA	2010
	Mondeo	2.0	TNBA	2010
	Mondeo	2.0	TPBA	2010
	S-MAX	2.0	TNWA	2010
	S-MAX	2.0	TNWB	2010
	S-MAX	2.0	TPWA	2010
	Focus	2.0	MGDA	2011
	Focus	2.0	XQDA	2011
Volvo	S60	1.6	B4164T3	2011
	S60	1.6	B4164T	2011
	S60	1.6	B4164T2	2011
	S80	1.6	B4164T	2010
	S80	1.6	B4164T2	2011
	V60	1.6	B4164T3	2011
	V60	1.6	B4164T	2011
	V60	1.6	B4164T2	2011
	V70	1.6	B4164T	2010
	V70	1.6	B4164T2	2011

ID	Part No.	OEM Ref.	Description
A	MM 23060 21X	999-7429 303-1097	Camshaft Sprocket Locking Tool
B	MM 23054 05X	999-7406 303-748	Crankshaft Locking Pin
C	E10500	999-7431 303-1550	Crankshaft Pulley Alignment Tool
D	MM 23060 10	303-393	Flywheel ring gear locking tool
E	MM23060 10CX	303-393-02	Tooth block for (D)

- Developed specifically for chain driven 2.0 direct injection petrol engines fitted with variable valve timing.
- Intended for locking the above engines in the correct position to allow timing/re-timing procedures to be undertaken.

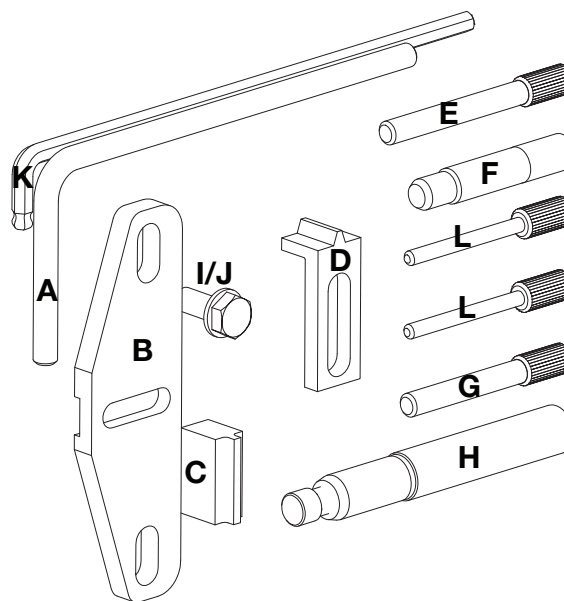
VOLVO DIESEL ENGINE LOCKING KIT

K00308

Make	Model	Size	Engine Code	Year	
Volvo	C70	2.0lt and 2.4lt 5 cylinder engines	D5204T2, D5204T3,	2006	
	S40		D5204T5, D5244T,	2004	
	S60		D5244T10,	2005	
	S80		D5244T11,	2006	
	V50		D5244T13,	2004	
	V60		D5244T14,	2010	
	V70		D5244T15,	2008	
	V70 XC		D5244T16,	2001	
	XC60		D5244T17,	2008	
	XC70		D5244T18,	2006	
	XC90		D5244T19,	2008	
	C30		D5244T2,	2008	
				D5244T3,	
			1.6lt 4 cylinder engines	D4164T, D4162T, D4164T2	
	1.9lt 4 cylinder engines	D4192T3, D4192T4			
	2.0lt 4 cylinder engines	D4204T, D4204T2, D4164T			



ID	Part No.	OEM Ref.	Description
A	23060 19	9997121	Flywheel Locking Pin
B	23060 10	9997119	Flywheel Holding Tool Plate
C	23060 10B	9997119	Flywheel Holding Tool Tooth/Bolt
D	23069 46	9997120	Flywheel Holding tool
E	23069 33	9997169	8mm Locking Pin
F	E10503	9997007	Camshaft Locking Pin
G	23069 25	9997122	Camshaft Locking Pin
H	E10504	9997005	Camshaft Locking Pin
I	SSM8x20B		M8 Setscrew
J	23051 02Z		M8 Washer
K	23177 03		6mm Ball end Hex Key
L	23069 04Z	9997169	5mm Setting Pin (2)



- Developed to change the cambelt on the single and twin cambelted diesel engines found in the Volvo range.
- The kit provides the locking tools required for both timing belt change and the dismantling of the gear driven cams fitted to the twin cam equipped engines in the Volvo range.

K00479**CAMSHAFT SETTING BAR FORD 1.6 ECO Boost**

Applications: C-Max 2011, Fiesta 2013, Focus 2011, Galaxy 2006, Mondeo 2007, S-Max to 2006.

Engine codes: JQDA, JQDB, JTBA, JTBB, JTDA, JTDB, JTWA, JTWB, KGBA

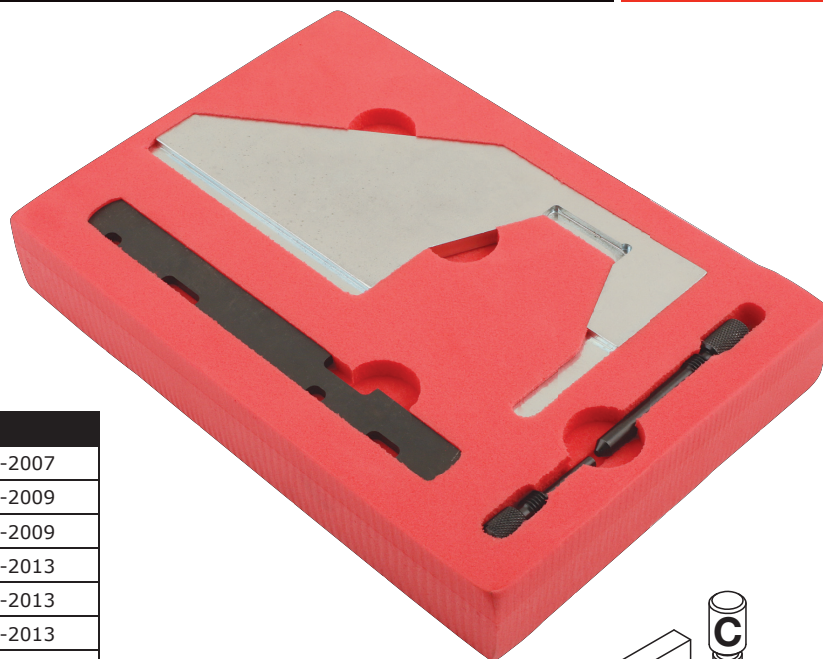
- The K00479 camshaft locking plate has been produced as an addition to the Eldon K00306 Ford kit for 1.6 ECO Boost Petrol (Sigma Engines)
- OEM No 303-1552
- Used to lock the camshafts in their timed position when engine repair or engine rebuild requires the Cam pulleys to be removed and timed. When combined with tools in the K00306 kit it allows the VVT mechanism to be set. Locates into slots in the back of the camshafts.

**K00480****CAMSHAFT ALIGNMENT TOOL FORD 2.0L EcoBoost (02/05/11 onwards)**

Make	Model	Size	Engine Code	Year
Ford	Mondeo	2.0 SCTi EcoBoost	TNBA, TPBA	2010-2013
	Galaxy, S-Max		TNWA, TNWB, TPWB	

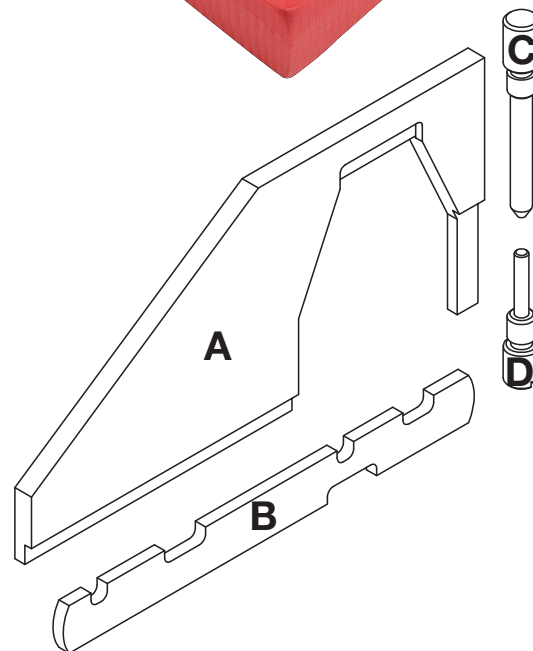
ID	Part No.	OEM Ref.	Description
A	E10581	303-1565	Camshaft Alignment Tool

- Intended to align the camshaft on the above vehicles.
- If the vehicle was produced prior to 02/05/11 please use Eldon tool E10335 to align the camshaft.

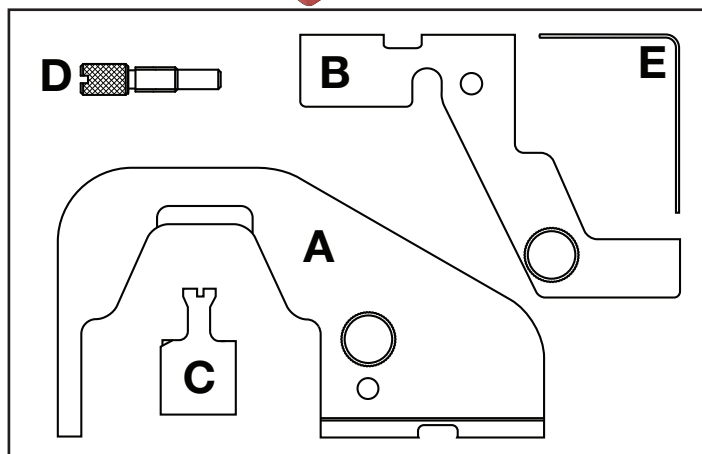
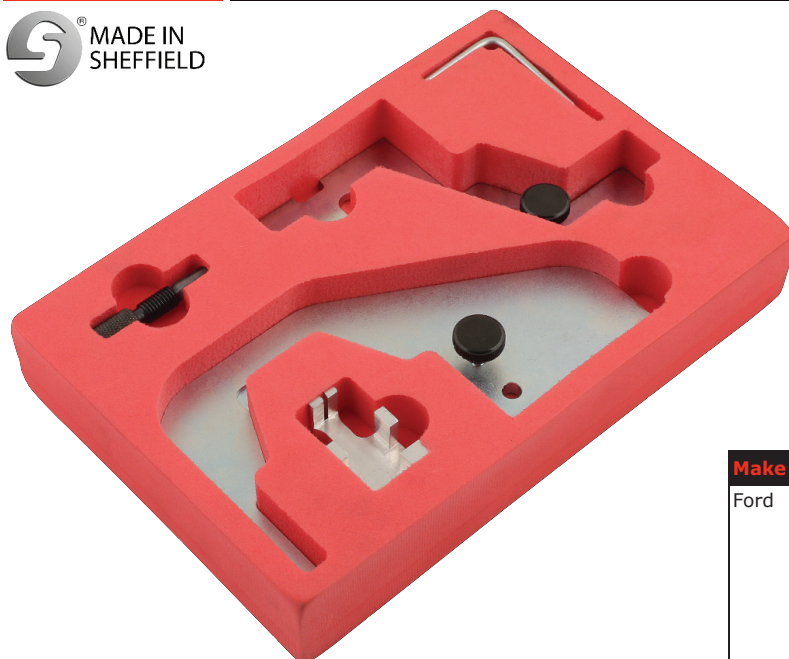


Make	Model	Size	Engine Code	Year
Ford	Mondeo	1.8	CFBA	2003-2007
	3	2.3	L3 Turbo	2006-2009
	3	2.3	L3 Turbo	2006-2009
	3	2	LF (MZR DISI)	2009-2013
	3	2.3	L3 Turbo	2009-2013
	5	2	MZR 2.0 (LF)	2010-2013
	6	2.3	L3 Turbo	2005-2007
	6	2	LF (MZR DISI)	2010-2013
	CX-7	2.3	L3 Turbo	2007-2012
	CX-7	2.3	L3 Turbo	2007-2012

ID	Part No.	OEM Ref.	Description
A	E10450	49 UN30 310610/ 303-1061	Camshaft Locking Plate
B	23054-06	999 7151/303 376/49JE01 054/303 367/49UN30 3376/21 162/21 162b	Locking Strap
C	23054-03	49N010 101/MOT 1430/303 620/999 7201/21-163	Crankshaft Timing Pin
D	23054-02	303-1587	Timing Pin



- Developed to lock the cam and crankshaft in position and allow the removal and replacement of the timing chain fitted to the twin cam engines listed above.
- Individual parts also available separately. Plate (A) and timing pin (D) also available as a separate kit - **Part No. K00485**.

K00483**FORD** 2.0 GTDi Ecoboost

Make	Model	Size	Engine Code	Year
Ford	Galaxy	2.0	TNWA	2010
	Galaxy	2.0	TNWB	2010
	Galaxy	2.0	TPWA	2010
	Mondeo	2.0	TNBA	2010
	Mondeo	2.0	TPBA	2010
	S-MAX	2.0	TNWA	2010
	S-MAX	2.0	TNWB	2010
	S-MAX	2.0	TPWA	2010
	Focus	2.0	MGDA	2011
	Focus	2.0	XQDA	2011

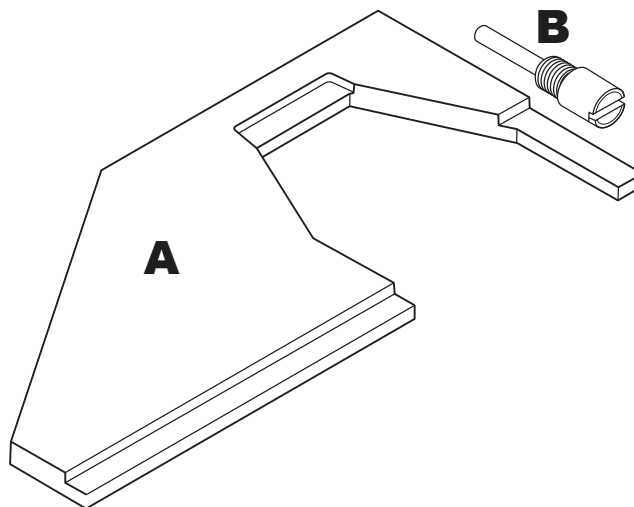
ID	Part No.	OEM Ref.	Description
A	E10335	303-1504	Camshaft Alignment Plate (up to May 2011)
B	E10581	303-1565	Camshaft Alignment Plate (May 2011 onwards)
C	E10599	303-1521	Crankshaft Position Alignment Pin
D	MM 23054 5A	303-748	Crankshaft Timing Pin
E	E10347-01	KM-955-2	Tensioner Pin 2mm
F	23164-04	KM 911	Flywheel holding tool

- Developed specifically for the chain driven 2.0L direct injection petrol engines fitted with variable valve timing.
- For engines fitted with SCTI Ecoboost/Ti-VCT petrol engines 2.0L.



Make	Description	Size	Engine Code	Year
Ford	Mondeo	1.8	CFBA	2003-2007
Mazda	3	2.3	L3 Turbo	2006-2009
	3	2.3	L3 Turbo	2006-2009
	3	2	LF (MZR DISI)	2009-2013
	3	2.3	L3 Turbo	2009-2013
	5	2	MZR 2.0 (LF)	2010-2013
	6	2.3	L3 Turbo	2005-2007
	6	2	LF (MZR DISI)	2010-2013
	CX-7	2.3	L3 Turbo	2007-2012
	CX-7	2.3	L3 Turbo	2007-2012

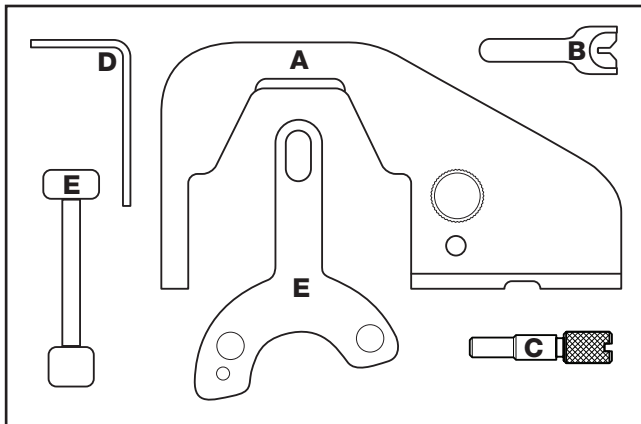
ID	Part No.	OEM Ref.	Description
A	E10450	303-1061 49 UN30 310610	Camshaft Locking Plate
B	23054-02X	303-507 49 JE01 061	Crankshaft Timing Pin



- Developed to lock the cam and crankshaft in position and allow the removal and replacement of the timing chain fitted to the twin cam engines listed above.

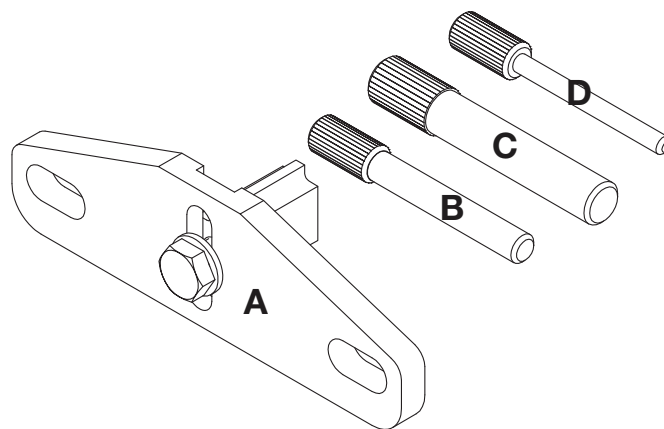
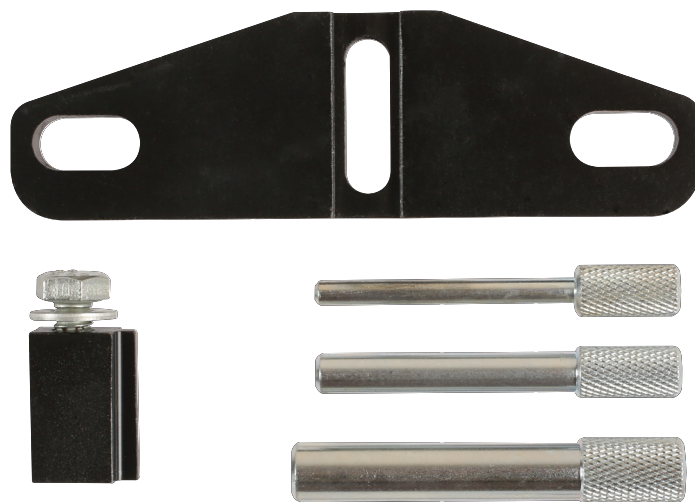
K00491**VOLVO 2.0 GTDi**

Make	Model	Size	Engine Code	Year	Type
Volvo	S60	2.0	B4204T6	2011	GTDi T
	S60	2.0	B4204T7	2010	GTDi T5
	S80	2.0	B4204T7	2010	GTDi T5
	S80	2.0	B4204T6	2009	GTDi Turbo
	V60	2.0	B4204T6	2010	GTDi T
	V60	2.0	B4204T7	2010	GTDi T5
	V70	2.0	B4204T7	2010	GTDi T5
	V70	2.0	B4204T6	2009	GTDi Turbo
	XC60	2.0	B4204T7	2010	T5
	XC60	2.0	B4204T6	2009	Turbo



ID	Part No.	OEM Ref.	Description
A	E10335	303-1504	Camshaft Alignment Plate
B	E10657	999-716	Crankshaft Position Sensor Alignment Tool
C	MM 23054 05X	303-1521	Crankshaft Timing Pin
D	E10347 03	303-748	3mm Tensioner Pin
E	E10565		Crankshaft Pulley Setting Tool
F	23164-04	KM 911	Flywheel holding tool

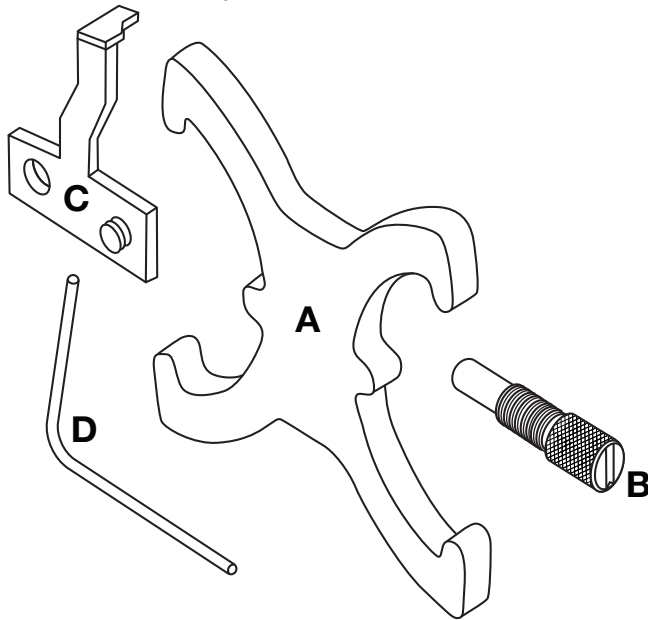
- This kit has been developed specifically for the 2.0L direct injection petrol engines fitted with variable valve timing and found in the Volvo range.
- Developed to allow the timing chain to be replaced whilst locking the crankshaft and camshafts in their correct timed positions.
- The K00491 also includes the special Volvo type crankshaft position sensor alignment tool.



Make	Model	Size	Engine Code	Year
Ford	Galaxy ('06)	1.6D TDCi	T1BA	2011-2013
	S-Max	1.6D TDCi	T1BA	2011-2013
	Mondeo	1.6D TDCi	T1BA/B/C	2011-2013
	Mondeo	1.6D TDCi EOnetic	T1BA/B/C	2011-2013

ID	Part No.	OEM Ref.	Description
A	MM 23060 10	303-393	Flywheel Locking Tool
B	MM 23069 25Z	303-735	Locking Pin (8mm Diameter, 70mm long)
C	MM 23060 11Z	303-734	Flywheel Locking Pin (12 x 55)
D	MM 23069 04Z	303-732	Setting Pin 5mm (5 x 50)

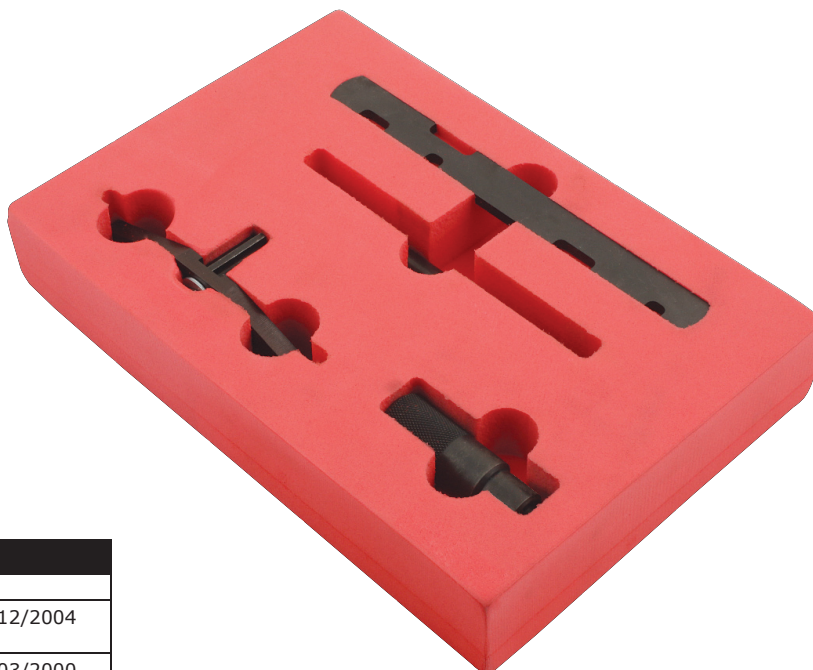
- Compact upgrade set intended for use on the above engines to securely lock and position the engine components in the correct orientation required during timing/re-timing procedures.

K00512**FORD | VOLVO** Ecoboost 1.6

Make	Model	Size	Engine Code	Year
Ford	B-MAX	1.6	IQJA	2012
	C-MAX	1.6	JQDA	2010
	C-MAX	1.6	JQDB	2010
	C-MAX	1.6	JTDA	2010
	C-MAX	1.6	JTDB	2010
	Focus	1.6	JQDA	2011
	Focus	1.6	JQDB	2011
	Focus	1.6	JTDA	2011
	Focus	1.6	JTDB	2011
	Galaxy	1.6	JTWA	2010
	Galaxy	1.6	JTWB	2010
	Grand C-MAX	1.6	JQDA	2010
	Grand C-MAX	1.6	JQDB	2011
	Grand C-MAX	1.6	JTDA	2010
	Grand C-MAX	1.6	JTDB	2011
	Mondeo	1.6	JTBA	2010
Mondeo	1.6	JTBB	2010	
S-MAX	1.6	JTWA	2010	
S-MAX	1.6	JTWB	2010	
Volvo	S60	1.6	B4164T3	2011
	S60	1.6	B4164T	2011
	S60	1.6	B4164T2	2011
	S80	1.6	B4164T	2010
	S80	1.6	B4164T2	2011
	V60	1.6	B4164T3	2011
	V60	1.6	B4164T	2011
	V60	1.6	B4164T2	2011
	V70	1.6	B4164T	2010
	V70	1.6	B4164T2	2011

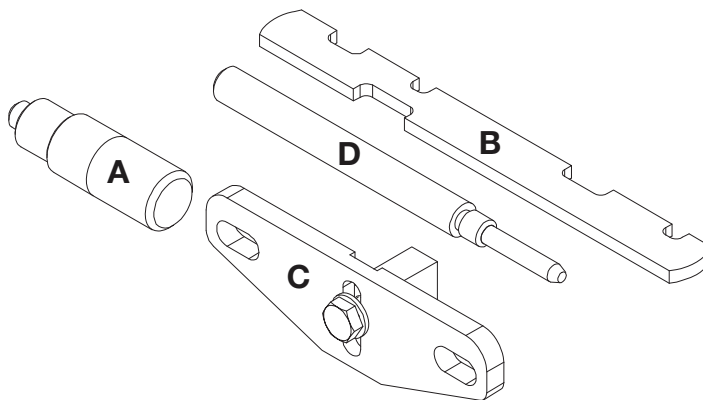
ID	Part No.	OEM Ref.	Description
A	23060-21X	999-7429 303-1097	Camshaft Sprocket Locking Tool
B	23054-05	999-7406 303-748	Crankshaft Locking Pin
C	E10500	999-7431 303-1550	Crankshaft Pulley Alignment Tool
D	E10347-03	303-1054	Tensioner Locking Pin

- Developed specifically for the 1.6 direct injection petrol engines fitted with variable valve timing and found in both the Ford and Volvo ranges.
- Intended for the locking of the above engines in the correct position to allow timing/re-timing procedures to be undertaken.



Make	Model	Engine Code	Year
Ford	C-MAX	1.8L Duratorq - TDCi/TDDi Diesel 1.8L ENDURA-DI	2006/03
	Focus		08/1998 - 12/2004 07/2004-
	Galaxy		02/1995 - 03/2000 03/2006
	Mondeo		02/2007-
	S-MAX		03/2006-
	Transit Connect		06/2002-
	Touneo Connect		06/2002-

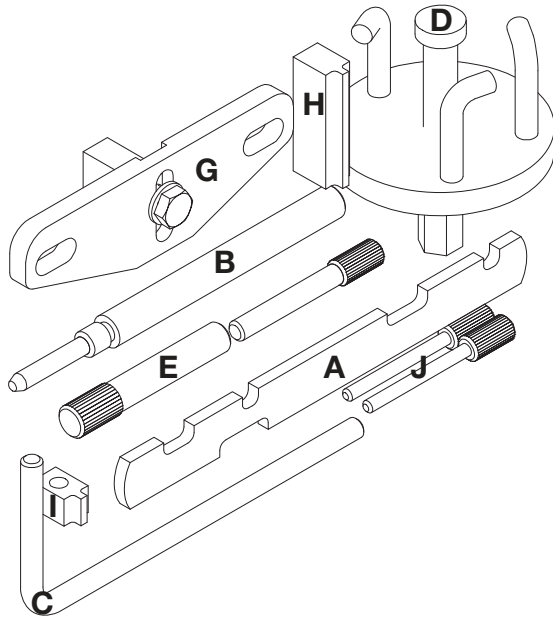
ID	Part No.	OEM Ref.	Description
A	E10571	303-710	Ford Crankshaft Alignment Tool
B	MM 23054 06X	21-162B 303-376	Camshaft Alignment Strap
C	MM 23060 10	21-168 303-393	Flywheel Locking Tool
D	MM 23060 SX	21-104 303-193	Setting Pin



- A fully comprehensive tool kit intended for use on a Ford 1.8 Duratorq TDCi. The kit includes a flywheel locking tool, camshaft alignment strap, crankshaft alignment pin and crankshaft sensor to flywheel locating pin to smooth the progress of vehicle timing.

K00604

FORD Diesel 1.4 TDCi | 1.6 TDCi | 1.8D Turbo



Make	Model	Size	Engine Code	Year
Ford	Fiesta	1.4 1.6L	F6JB, F6JC, F6JD, HHJA, HHJB, HHJD	2002-2011
	Fusion	1.4 1.6L	F6JB, F6JC, F6JD, HHJA, HHJB, HHJD	2002-2011
	Focus	1.6L	G8DA, G8DB, HHDA, HHDB	2004-2011
	Focus C-Max	1.6L	G8DA, G8DB, HHDA, HHDB	2003-2007
	C-Max	1.6L	G8DA, G8DB, HHDA, HHDB	2007-2010
	Fiesta	1.8L	RTN, RTQ, RTP, C9DC	2000-2002
	Courier	1.8L	RTN, RTQ, RTP, C9DC	2000-2002
	Focus	1.8L	BHDA, BHDB, C9DA, C9DB, C9DC, F9DA, F9DB, FFDA, KKDA	1998-2011
	Tourneo Connect	1.8L	BHPA, HCPA, P9PA, R2PA, RWPA, HCPB, P7PA, R3PA	2002-2013
	Focus C-Max	1.8L	BHPA, HCPA, KKDA	2003-2007
	Transit Connect	1.8L	BHPA, HCPA, P9PA, R2PA, RWPA, HCPB, P7PA, R3PA	2002-2013
	C-Max	1.8L	BHPA, HCPA, KKDA	2007-2010
	S-Max	1.8L	QYWA, FFWA, QYWA	2006-2010
	Galaxy	1.8L	QYWA, FFWA, QYWA	2006-2010
	Mondeo	1.8L	FFBA, QYBA, AZBA, AZWA	2007-2010
	Focus	2.0L	G6DA, G6DC, G6DE, G6DB, G6DD, G6DF	2004-2011
	Focus C-Max	2.0L	G6DA, G6DC, G6DE, G6DB, G6DD, G6DF	2003-2007
	C-Max	2.0L	G6DA, G6DC, G6DE, G6DB, G6DD, G6DF	2007-2010
	S-Max	2.0L	QXWA, TYWA, UFWA, UKWA	2006-2014
	Galaxy	2.0L	QXWA, TYWA, UFWA, UKWA	2006-2010
	Kuga	2.0L	G6DB	2008-2010
	Mondeo	2.0L	QXBA, QXBB, AZBC, TXBA, TYBA, UFBA, UKBA	2007-2014
	Mondeo	2.0L	KNBA, Q4BA	2010-2014
	S-Max	2.2L	Q4BA	2008-2010
	Galaxy	2.2L	Q4BA	2008-2010

ID	Part No.	OEM Ref.	Description
A	23054-06	303-376B	Camshaft Bracket
B	23060-S	303-193	Crankshaft TDC Pin
C	23060-19	303-1059	Flywheel Pin
D	23060-16	303-651	Camshaft Sprocket Puller
E	23069-25	303-735	Camshaft Sprocket Pin
F	23069-04	303-732	Crankshaft Fuel Pump Pin x 2
G	23060-11	303-734	Flywheel Locking Tool
H	23060-10	303-393	Flywheel Locking Tool All Teeth 01, 02, 03
I	23062-B	21-105	Cam Bracket

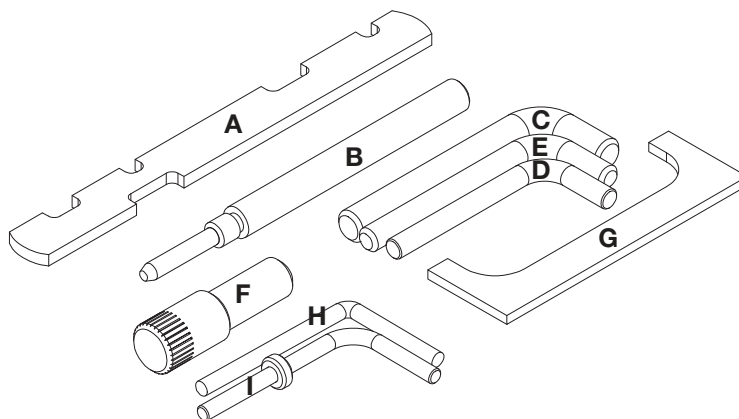
- A comprehensive tool set intended for use on the above vehicles. Set is intended to complement the standard workshop procedures & hold / lock the above engines in the timed position to allow accurate timing/retiming of the above engines. This procedure should be under taken as part of the vehicles regular service intervals.



Make	Model	Size	Engine Code	Year
Ford	Escort	1.6L	LTA, LTC	1984-1989
	Orion	1.6L	LTA, LTC	1984-1989
	Fiesta	1.6L	LTB	1984-1989
	Escort	1.8L	RTA, RTB	1989-1990
	Orion	1.8L	RTA, RTB	1989-1990
	Fiesta	1.8L	RTC, RTD, RTG	1989-1996
	Courier	1.8L	RTC, RTD, RTG	1991-1996
	Escort	1.8L	RTE, RTF, RTH	1990-1999
	Orion	1.8L	RTE, RTF, RTH	1990-1994
	Fiesta	1.8L	RTJ, RTK	1996-2002
	Courier	1.8L	RTJ, RTK	1996-2002
	Escort	1.8L	RVA	1995-1999
	Escort	1.8L	RVA	1994-1995
	P100	1.8L	RFA	1989-1994
	Mondeo	1.8L	RFM, RFN	1993-1996
	Galaxy	1.9L	AFN, AVG, 1Z	1995-2000
	Transit	2.5L	4FA, 4FB, 4FC, 4FD, 4HB, 4HC, 4EB, 4EC, 4GA, 4GB, 4GC, 4GD, 4GE, 4GF, 4HA, 4HD, 4ED	1994-2000
Transit	2.5L	4GA	1991-1994	



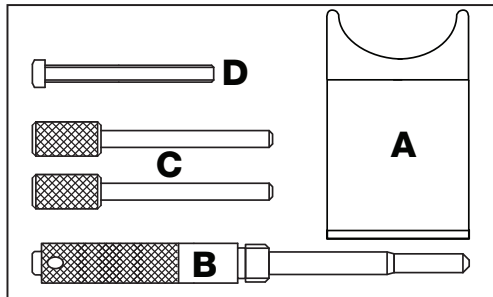
ID	Part No.	OEM Ref.	Description
A	23054-06	303-376B	Camshaft Bracket
B	23060-S	303-193	Crankshaft TDC Pin
C	23060-01	310-018	Cam/Injection Pin 6mm (with washer)
D	23060-06	310-019	Pump Pin
E	23060-03	310-033	Pump Pin
F	23060-04	21-123	Timing Pin
G	23060-02	23-019	Timing Pin 6mm (no washer)
H	23061-01	23-047	Injection Pump Pin
I	23062-B	21-105	Cam Bracket



- A comprehensive tool set intended to complement the standard workshop procedures and hold/lock the above engines in the timed position to allow accurate timing/retiming. This procedure should be undertaken as part of the vehicle's regular service intervals.

K00205

HONDA Petrol Engines (Belted engines)



Applications: Honda 1.6-3.0 SOHC twin cam engines

Engines: 1.6 B16A2 | 1.8 F18A3 | F18B2 | F18B4 | 2.0 F20AF | F20B3 | F20B5 | F20B6 | F20B7 | F20Z1 | F20Z2 | 2.2 F22Z2 | F22B5 | F22B8 | F22A2 | H22A5 | H22A7 | H22A8 | 2.3 F23A7 | F23Z5 | H23A2 | H23A3 | 3.0 J30A1

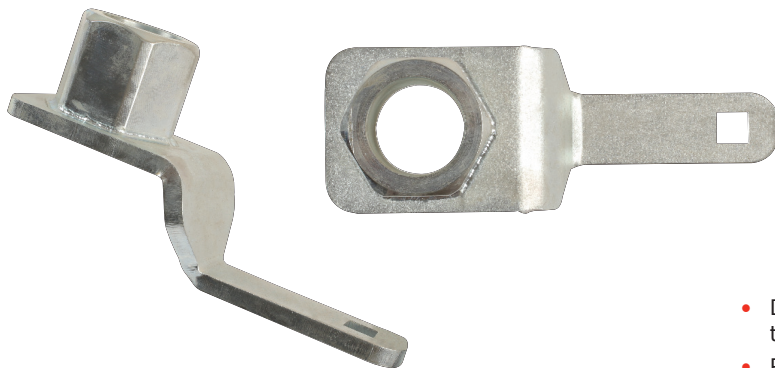
Models: Civic (91-95) | Accord (93-03) | Prelude (92-01) | Shuttle (95-01) | Odyssey (95-01)

ID	Part No.	OEM Ref.	Description
A	E10253	14540-P13-003	Tensioner Clamp
B	23057	07LAG-PT20100 18G1671	Balancer Shaft Locking Tool
C	23069-04	07744-0010400	Camshaft Locking Pins x 2
D	23061-08	M6 Bolt	M6 Setscrew

- Engine timing locking tools for twin cam, belt driven Honda engines.

K00206

CRANKSHAFT HOLDING TOOL HONDA

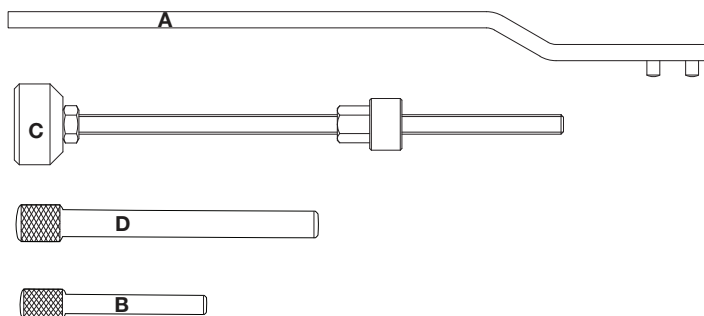


- Designed to hold the crankshaft pulley whilst removing the crankshaft pulley retaining bolt on Honda vehicles.
- Requires 1/2"D breaker bar to hold the tool during use.

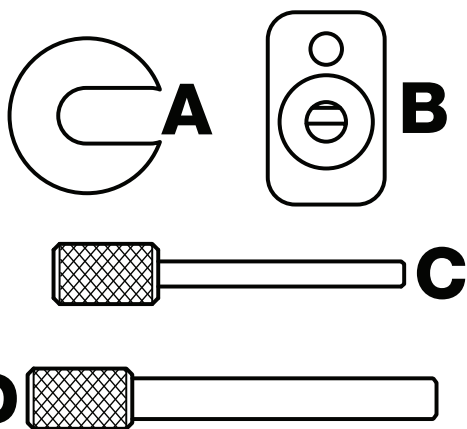


Make	Model	Engine Code	Year
Honda	Civic Accord 2.0TD	20T2N 20T2R	1996-2003
Land Rover	Freelander 20TD	20T	1997-2000
Rover	420D Turbo 620 DT 200TD 25 2.0TD 45 2.0TD	20T2N 20T2R 20T	1995-1999 1995-2001
MG	ZR ZS 2.0TD	20T	2001-2003

ID	Part No.	OEM Ref.	Description
A	E10519	12 184	Tensioner Lever
B	E10518	18G-1523 LRT- 12-058	Flywheel Locking Pin
C	E10520	18G-1719 LRT-12-143	Tensioner Tool
D	E10366	18G-1717 LRT-12-141	Injection Pump Pulley Pin



- Developed to allow the Cam belt to be changed on the 2.0L turbo diesel engines found in Honda, Rover and Land Rover ranges. The kit provides the locking tools required to change both the valve timing belt and the diesel pump belt.

K00208**FIAT | IVECO | PSA 2.8 diesel engines (belt driven)****Applications:**

Fiat Ducato 2.8 TD | JTD

Iveco 2.8 D | TDi

Citroën Relay/Jumper 2.8D | HDi | TDi

Peugeot Boxer | Boxer II D | HDi | TDi

Engine codes:

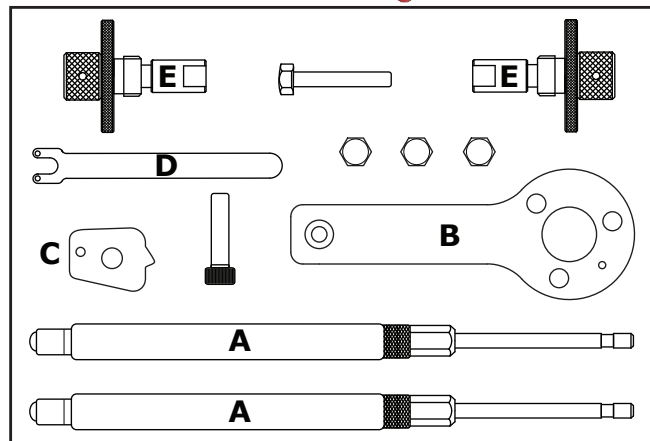
8140.43 | 8140.43N | 8140.43S | 8140.63

ID	Part No.	OEM Ref.	Description
A	23101-01	1 860 638 000	Tensioner Tool
B	E10261	1 870 765 001	Flywheel Holding Tool
C	23069-04	1 860 617 000	Camshaft/HP locking Pin
D	23069-33		8mm Flywheel Timing Pin

- Developed for Fiat 2.8 diesel engines that are found in the Fiat, Iveco and PSA van ranges. This kit provides all the tools required to set the timed components when replacing the timing belt.
- The kit also includes the components required to lock the flywheel when undoing and tightening up the front pulley fixings as well as the special spacer to hold the belt tensioner in its fully retracted position.

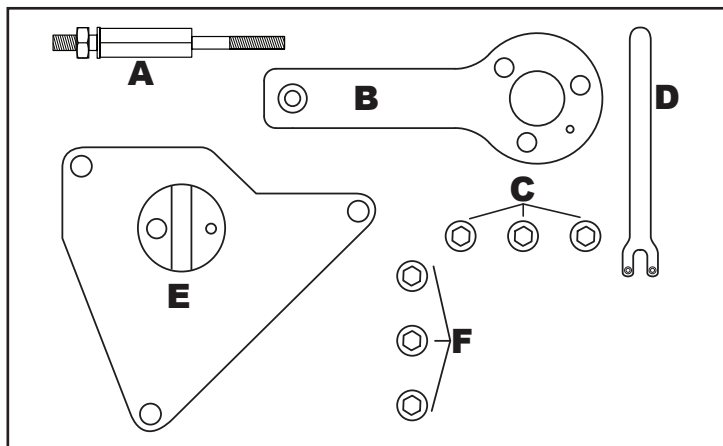


Make	Model	Size	Engine Code	Year
Alfa Romeo	Giulietta	1.4 16V	198A4.000	2010-2012
	MiTo	1.4	198A1.000	2008-2010
	MiTo	1.4	198A4.000	2008-2010
	MiTo	1.4 Bi-Fuel LPG	199A6.000	2008-2010
	MiTo	1.4 T-Jet	199A8.000	2008-2011
	MiTo	1.4 T-Jet	955A1.000	2008-2012
Fiat	500	1.4 T-Jet	169A3.000	2007-2012
	Brava	1.2 16V	182B2.000	1998-2000
	Brava	1.2 Abarth	188A5.000	2000-2002
	Bravo	1.4 Abarth Esseesse	192B2.000	2009-2012
	Bravo	1.4	198A1.000	2007-2011
	Bravo	1.4 16V	198A4.000	2007-2012
	Grande Punto	1.4 16V	198A4.000	2007-2010
	Grande Punto	1.4	199A6.000	2006-2010
	Grande Punto	1.4	199A8.000	2007-2010
	Grande Punto	1.4 16V	199A8.000	2008-2010
	Idea	1.2	188A5.000	2004-2012
	Idea	1.4	192B2.000	2004 -2012
	Idea	1.4 16V	843A1.000	2004 -2012
	Marea	1.2	182B2.000	1998-2000
	Marea Weekend/Marengo	1.2	182B2.000	1998-2000
	Palio Weekend	1.2 16V	188A5.000	2001-2006
	Panda	1.4	169A3.000	2006-2011
	Punto	1.2	176B9.000	1997-1999
	Punto/Punto Classic	1.2	188A5.000	1999-2008
	Punto/Punto Classic	1.4	843A1.000	2003-2006
Stilo	1.2	188A5.000	2001-2004	
Stilo	1.4	192B2.000	2005-2008	
Lancia	Stilo	1.4	843A1.000	2004-2008
	Delta	1.4 T-Jet 150	198A1.000	2008-2011
	Delta	1.4 T-Jet 120	198A4.000	2008-2012
	Delta	1.4 T-Jet 120 LPG	198A4.000	2009-2012
	Musa	1.4 16V	843A1.000	2004-2012
Ypsilon	1.2 16V	176B9.000	1996-2000	
Ypsilon	1.4 16V	843A1.000	2003-2006	



ID	Part No.	OEM Ref.	Description
A	23171 01	1 860 992 000	Piston Height Gauge (2)
B	23231	2 000 004 500	Crankshaft Locking Tool
C	E10229 01	2 000 015 800	Camshaft Pulley Holding Tool
D	23171 07	1 860 987 000	Tension Tool
E	23171 02	1 860 985 000/1 871 000 900	Camshaft Setting Tools (2)

- Tool kit aimed specifically at the above applications. Comprises of important tools for locking the engine in the correct orientation and for adjustment of critical components to assist the timing/re-timing of the above engines.

K00278**FIAT | ALFA ROMEO 1.4L MultiAir**

Make	Model	Size	Engine Code
Alfa Romeo	MiTo	1.4 (105)	955A6.000
	MiTo	1.4 (135)	955A2.000
	Giulietta	1.4 (170)	940A2.000
Fiat	Punto EVO	1.4 (105)	955A6.000
	Punto EVO	1.4 (135)	955A2.000
Lancia	Delta	1.4	955A7.000

ID	Part No.	OEM Ref.	Description
A	MM 23111 08E	2190754200	Fixing Post for Crankshaft Locking Plate
B	23231	2000004500	Crankshaft Locking Plate
C	CHM8X20SKT		Fixing Bolts for B x 3
D	23171 07	1860987000	Tensioner Adjusting Tool
E	E10441	2000034400	Camshaft Timing Plate
F	CHM8X20SKT		Fixing Bolts for E

- Developed to lock the cam and crankshaft in position to allow the removal and replacement of the timing belt fitted to the new generation 1.4 Fiat MultiAir engines.

FIAT | ALFA ROMEO 0.9L TwinAir Turbo

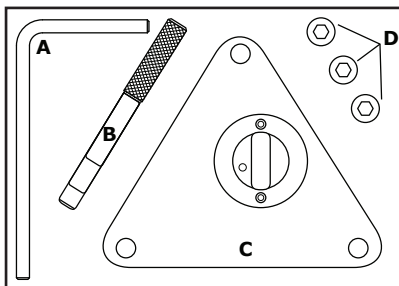
K00279

Make	Model	Engine Code	Year
Alfa Romeo	Mito	312A2.000	2012 <
Fiat	500/500c	312A2.000	2010 <
	Panda	312A2.000	2012 <
	Punto	312A2.000	2012 <
Lancia	Ypsilon	312A2.000	2011 <



ID	Part No.	OEM Ref.	Description
A	E10444 01	2 000 035 300	Flywheel Locking Tool
B	E10444 02	2 000 035 200	Pulley Locking Pin
C	E10447	2 000 035 100	Camshaft Locking Plate
D	MM 23162 82B		Fixing Screws

- This tool kit has been designed to lock the cam and crankshaft in position to allow the removal and replacement of the timing chain fitted to the new low emission and high economy twin cylinder Fiat engine.
- It should be noted that Fiat state that after rebuild these engines should be placed on suitable electronic diagnostic software for the onboard electronic control systems to be reset.



CAMSHAFT PULLEY HOLDING TOOLS FORD 1.3D

K00481



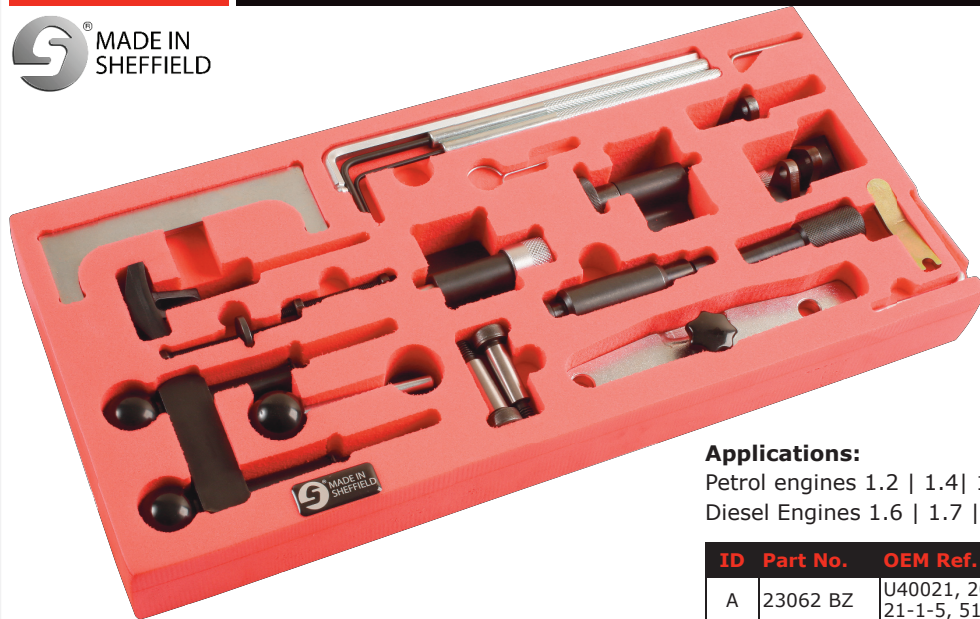
Applications:

Fiat | Ford KA 2009 1.3 Duratorq Diesel
P.T.O. for full applications list

- Designed to loosen and tighten the camshaft pulley fixings without moving the camshafts or causing damage to timing tools.
- Conveniently designed to allow the use of a 1/2"D wrench
- Equivalent to Ford OEM tool number 303-1475

K00222

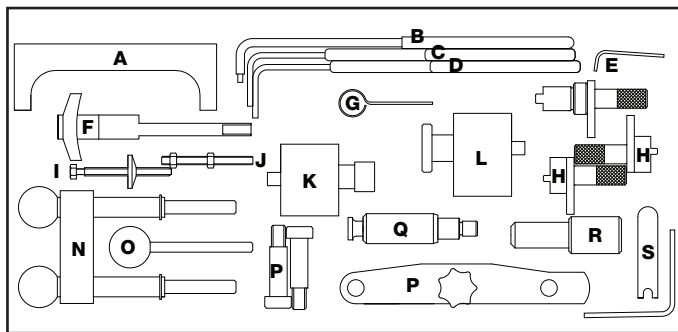
VOLKSWAGEN AUDI GROUP



Applications:

Petrol engines 1.2 | 1.4 | 1.6 | 1.8 from 1991 to 2014

Diesel Engines 1.6 | 1.7 | 1.9 | 2.0 | 2.4 | 2.5 1980 to 2010

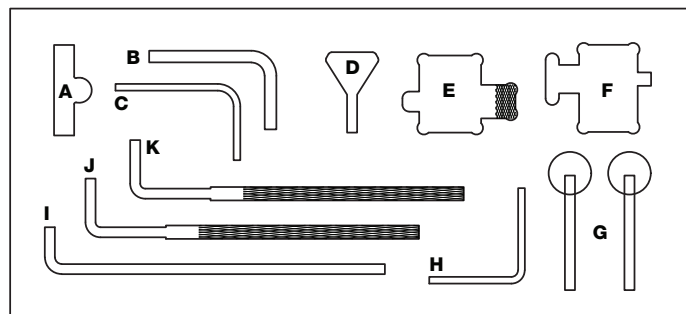


- Camshaft Locking Bracket | 6mm Ball Hex | 3.9 Ten Locking Pin | 2.5 Ten Locking Pin | Tensioner Pin | Chain tensioner retainer | Tensioner Pin | Camshaft Tool | Chain tensioner retainer | Stud & Nuts M5 x 55mm | Crankshaft Locking | Crankshaft locking | Camshaft Tools x2 | Camshaft Locking | Locking Pin X2 | Setting Bracket | Screws for 23161 B | Crankshaft Tool | Injection Pump Pin | Tensioner locking tool | Tensioner Locking Pin

ID	Part No.	OEM Ref.	Description
A	23062 BZ	U40021, 2065A, MP1-300, 21-1-5, 5190, 999 5190	Camshaft Locking Bracket
B	23177 03	T10264	6mm Ball Hex
C	23177 01	T40098	3.9 Ten Locking Pin
D	23177 02	T10265	2.5 Ten Locking Pin
E	E10517	T10115, 303-1054	Tensioner Pin
F	23161 92	3366	Chain Tensioner Retainer
G	23161 06A	T20046	Tensioner Pin
H	23176 02X	T10120	Camshaft Tool
I	23161 93	T10092	Chain Tensioner Retainer
J	23161 05		Stud & Nuts M5 x 55mm
K	23161 03c	T10100	Crankshaft Locking
L	23161 03A	T10050, 23-059, 310-085	Crankshaft locking
M	23176 01X	T10123	Camshaft Tools x 2
N	23069 14	T10016, T10074	Camshaft Locking
O	23069 11	U40074, MP1-301, 3359, T20102	Locking Pin x 2
P	23161 B	T10098, 3418, MP1-312, T20038	Setting Bracket and Screws 23161-04A
Q	23176 03X	T10121	Crankshaft Tool
R	23061 01X	2064, 23-047, U20003, 5193, 15-046, 999 5193	Injection Pump Pin
S	23069 12Y	T10008, 23-058, 310-084	Tensioner Locking Tool
T	23161 96Z	T10060A, T10060, T40098, T20167	Tensioner Locking Pin



Model	Engine	Year
Beetle	ATD, AXR, BSW	2000-2010
Bora	AJM, ANU, ARL, ASZ, AUY, BEH	1998-2006
Caddy/Caddy Maxi	BDJ, BMM, BST	2003-2010
Eos	CBAB	2006-2010
Fox	BNM	2005-2009
Golf	CBBB, BXJ, AZV, BKD, BMN, CBAA	2003-2010
Golf Estate		2007-2009
Golf Estate/Golf Plus	CBDA, CBDB	2007-2010
Golf Plus		2005-2009
Golf/Golf Estate	CJAA	2009-2012
Golf/Golf Estate		1998-2010
Golf/Golf Estate/Golf Plus		2005-2009
Golf/Golf Estate/Golf Plus	CAYB, CAYC	2009-2012
Golf/Golf Plus	CBDC, BXF	2006-2010
Jetta		2005-2012
Lupo	AMF, ANY, AYZ	1999-2005
Passat		1998-2012
Passat	AVB, AVF, AWX	2003-2009
Passat	BKP, BMA, BMR, BUZ, BWV	2005-2009
Polo		1999-2010
Polo	BAY, BMS, BWB, BNV, CAYA	2005-2012
Scirocco		2008-2012
Sharan		1999-2011
Sharan	BTB, BVK	2002-2009
Tiguan		2007-2010
Touran		2003-2012
Transporter	AXB, AXC	2005-2011
Transporter	BRR, BRS	2006-2010

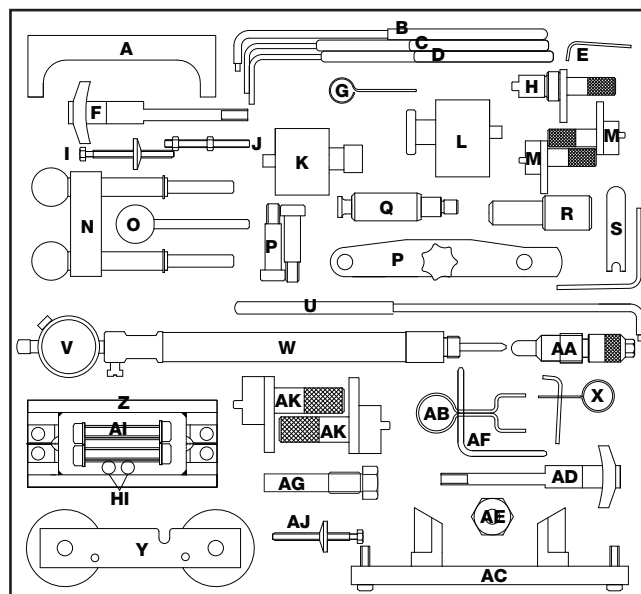


Set Ref	Eldon Code	Description	OEM Tool Code
A	23069 12Y	Tensioner Locking Tool	310-084, 23-058, T10008
B	E10347-07	Tensioner Locking Tool	
C	E10347-04	Tensioner Locking Tool	
D	E10517	Tensioner Pulley Locking Pin	303-1054, T10115,
E	23161-03C	Crankshaft Setting Tool	T10100
F	23161 03A	Crankshaft Setting Tool	310-085, T10050, 23-059
G	23069-11	Injection Pump Locking Pin	3359, T20102, U40074, MP1 301,
H	23161 96Z	Auxiliary Drive Belt Tensioner Locking Pin	T10060, T1006A, T20167
I	23177 03	Ball End Hex Key 6mm	T10264
J	23177 01	3.9mm Tensioner Pulley Locking Pin	T40098
K	23177 02	2.5mm Tensioner Pulley Locking Pin	T10265

K00249**VOLKSWAGEN AUDI GROUP** engines (including 2012)

Make	Model	Size	Engine Code	Year
VAG	Lupo Bora Golf/Golf Plus/Golf Estate Caddy/Caddy Maxi Polo/Polo Classic/Polo Estate Beetle A2 Fabia Octavia/Octavia II/ Octavia Tour Roomster Arosa Leon Toledo Cordoba Ibiza Inca	1.4 1.4 16v 1.4 FSI	AFK AHW AKQ APE AQQ ARR AUA AUB AXP BBY BBZ BCA BKY BUD CGGA	1997-2012
	Bora Golf/Golf Estate Lupo Polo Leon Toledo	1.6 16v 1.6 FSI	AJV ARC ATN AVY BCB BAD	1998-2006
	Caddy Lupo Polo/Polo Classic/Polo Estate Arosa Cordoba Ibiza	1.7D 1.7D SDI	AHG AKU AHB AKW	1996-2005
	Polo/Polo Classic/Polo Estate Caddy/Caddy Pickup Passat Vento Golf/Golf Estate/Golf Cabrio Sharan Bora Beetle Transporter Toureg A3 A4/A4Quattro A6/A6 Quattro 80 Felicia/Van/Pick up Octavia/Octavia Tour Cordoba Ibiza Inca Alhambra Toledo Leon	1.9D 1.9D Turbo 1.9D TDI 1.9D SDI	AGD ASX AEY AFN AHU ALE AEF 1Y AGP AGR AHF ALH AQM ASV AYQ 1X AAZ ABL	1991-2006
	Polo Fabia/Fabia II Roomster Praktik Cordoba Ibiza	1.2 3cyl	AZQ BME BZG	2002-2010

ID	Part No.	OEM Ref.	Description
A	23062 BZ	U40021, 2065A, MP1-300, 21-1-5, 5190, 999 5190	Camshaft Locking Bracket
B	23177 03	T10264	6mm Ball Hex
C	23177 01	T40098	3.9 Ten Locking Pin
D	23177 02	T10265	2.5 Ten Locking Pin
E	E10517	T10115, 303-1054	Tensioner Pin
F	23161 92	3366	Chain tensioner retainer
G	23161 06A	T20046	Tensioner Pin
H	23176 02X	T10120	Camshaft Tool
I	23161 93	T10092	chain tensioner retainer
J	23161 05		Stud & Nuts M5 x 55mm
K	23161 03c	T10100	Crankshaft Locking
L	23161 03A	T10050, 23-059, 310-085	Crankshaft locking
M	23176 01X	T10123	Camshaft Tools x 2
N	23069 14	T10016, T10074	Camshaft Locking
O	23069 11	U40074, MP1-301, 3359, T20102	Locking Pin x 2
P	23161 B	T10098, 3418, MP1-312, T20038	Setting Bracket and Screws 23161-04A
Q	23176 03X	T10121	Crankshaft Tool
R	23061 01X	2064, 23-047, U20003, 5193, 15-046, 999 5193	Injection Pump Pin
S	23069 12Y	T10008, 23-058, 310-084	Tensioner locking tool
T	23161 96Z	T10060A, T10060, T40098, T20167	Tensioner Locking Pin
U	E10436		Tensioner
V	23161 93		Dial Test Indicator
W	23162 61D		5mm tdc
X	23051 02Z		Tensioner Locking Pin 1.4mm
Y	23161 94		Camshaft Alignment Tool
Z	23161 96Z	T40070	Camshaft Alignment Tool
AA	23161 95	T40069	TDC Alignment Pin
AB	23161 92		Tensioner Locking Pin
AC	23161 91		Camshaft Setting Tool
AD	23162 63A		Chain Tensioner Retainer
AE	23162 62A		Tensioner Pin
AF	23162 61		Pulley Bolt
AG	23162 41		Locking Pin
AH	23161 06Z		Washer M8 Zinc Plated
AI	23107 B		M8 X 50 Bolt
AJ	23072 A		Tensioner Bolt
AK	23044 04		Crankshaft Locking Tool



- VAG petrol/diesel master kit aimed specifically at the above applications. Comprises of a set of important tools for locking the engine in the correct orientation and adjustment of critical components to assist the timing/re-timing of the above applications.

K00277**AUXILLIARY BELT SPANNER | VOLKSWAGEN AUDI GROUP 1.4 TSi**

Make	Model	Size	Engine Code	Year
Volkswagen	Beetle	1.4 TSI & 1.4 TSI bluemotion	CAVD, CAXA, CAVB, CAVC	2011-2013
	Eos			2007-2013
	Golf (03-08)			2007-2008
	Golf (08-)			2008-2013
	Golf Estate (07-09)			2008-2009
	Golf Estate (09-)			2009-2010
	Golf Plus (05-09)			2008-2009
	Golf Plus (09-)			2009-2013
	Golf VI Cabrio (11-)			2011-2013
	Jetta (05-11)			2008-2011
	Jetta (11-)			2011-2013
	Scirocco (08-)			2008-2013
	Passat (05-11)			2007-2011
	Passat (11-)			2011-2013
	Tiguan			2010-2013
Polo (09-)	2010			
Touran	2007-2013			
Audi	Audi A1	1.4 TFSI	CAXA	2010-2013
	Octavia (04-)			2010-2013
Skoda	Yeti	1.4 TSI		

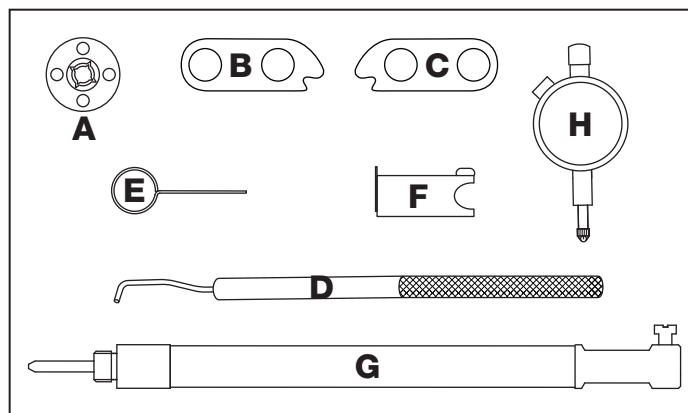
Part No.	OEM Ref.	Description
E10597	T10447	A/F Spanner For Auxillary Belt

- A 16.0 mm across flats spanner with PVC handle intended for use on VAG vehicles (predominantly Volkswagen) utilising the 1.4 TSI engines. The cranked spanner is required for releasing tension on the auxiliary drive belt, which is achieved by rotating the engines' spring loaded belt self Tensioner away from the belt.

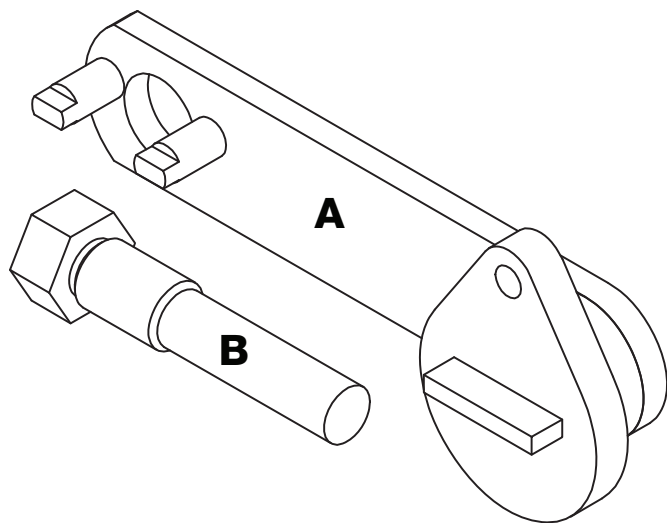
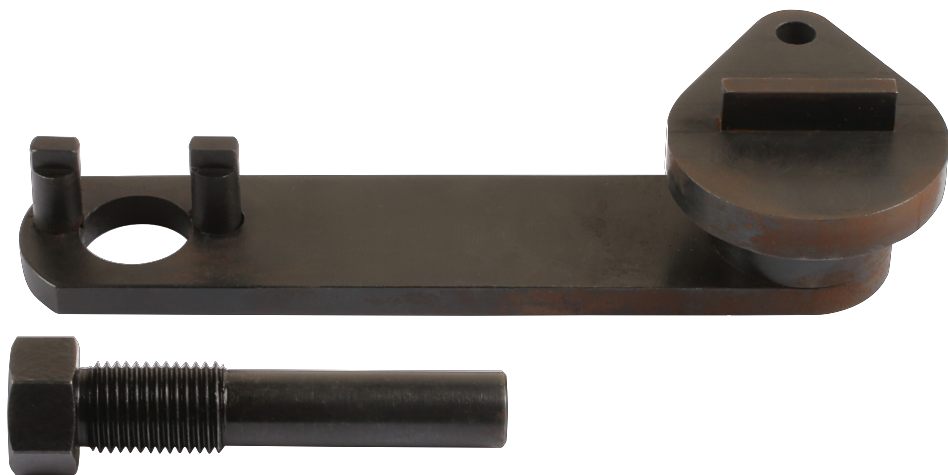
**Applications:**

1.2 | 1.4 FSi and TFSi engines.

ID	Part No.	OEM Ref.	Description
A	T10352	E10124	Camshaft Control Valve Removal Tool
B	T40271-1	E10462	Camshaft Clamp
C	T40271-2	E10463	Camshaft Clamp
D	T40265	E10530	Oil Pump Tensioner locking pin
E	T40011	23161 06A	Tensioner Locking Pin 1.4mm
F	T40267	E10780	Timing Chain Tensioner
G	T10170	23107 B	TDC Indicator
H	VAS6079	23072 A	DTI Gauge



- Designed to allow removal and replacement of the timing chain and camshaft sprockets on the 1.8/2.0 TFSi and TSi petrol engines commonly found in the Volkswagen Audi Group of vehicles.
- The kit includes the special camshaft pulley locking blocks required for the later generation 3 TFSi/TSi engines.
- The kit consists of 8 main components which include the tools recommended by the manufacturer to set number one cylinder at TDC. It is important that the correct process is followed when setting up these engines.

K00282**CAMSHAFT LOCKING TOOLS | VOLKSWAGEN AUDI GROUP 3cyl 4v**

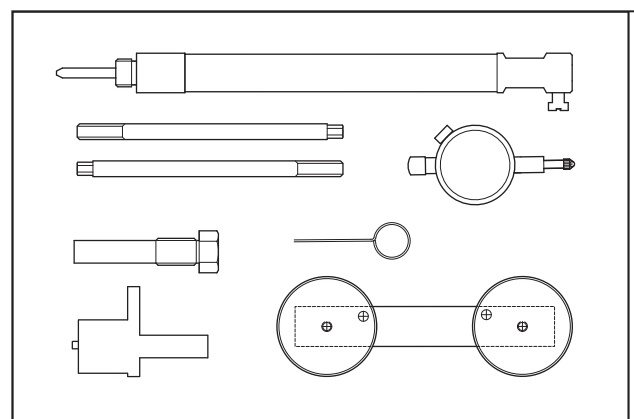
Make	Model	Size	Engine Code	Year
Volkswagen	Up!	CHYA	1.0	2011-2013
		CHYA	1.0 BlueMotion	2012-2013
		CHYB	1.0	2011-2013
		CHYB	1.0 BlueMotion	2012-2013
		CPGA	1.0 Ecofuel	2012-2013
Seat	Mii	CHYA	1.0	2012-2013
		CHYB	1.0 Ecomotive	2012-2013
Skoda	Citigo	CHYA	1.0	2011-2013
		CHYB	1.0 Green Tech	2011-2013

ID	Part No.	OEM Ref.	Description
A	E10460	T10477	Camshaft Locking Tool Assembly - VAG 3Cyl 4V
B	MM 23191 02X	T10341	Locking Pin

- Camshaft alignment and locking tool with locking pin aimed at VAG 3 cylinder vehicles bearing the above engine codes. Kit intended to facilitate the correct engine positioning and locking required during timing and re-timing procedures.
- Kit intended for use with camshaft holding tool K00231, MM 23106, T10172 or similar and OEM T10476



ID	Part No.	OEM Ref.	Description
A	E10436	T10414	Camshaft Locking Tool
B	23072-A	VAS 6079	Dial Test Indicator 41 x 8mm
C	23107-B	T10170	TDC Indicator
D	23162-41	T10171	Camshaft Alignment Tool
E	23161-06	T20046 T40011	Tensioner Pin
F	23191-02	T10340	Crankshaft Locking Pin
G	23191-01	T10341	Guide Pins (2)



- Engine timing tool kit consisting of: camshaft locking tool | dial test indicator | TDC adaptor | camshaft alignment tool | tensioner pin | crankshaft locking pin | guide pins (2).

K00344

CAM CHAIN TENSIONER | VOLKSWAGEN TFSi



Make	Model	Size	Engine Code	Year		
Audi	A3	4 Cylinder 1.8 2.0 4 valve TFSi (Generation III) VAG 1.8 and 2.0 TFSi	CCZA CCZB CCZC CCZD CDAA CCAB	2008 on		
	A3 Cabrio			2009 on		
	TT			2008 on		
	Q3			2011 on		
Seat	Alhambra					2010 on
	Leon					2009 on
	Toledo					2009 on
	Altea					2009 on
Skoda	Octavia II					2008 on
	Superb II					2009 on
	Yeti					2009 on
Volkswagen	Beetle					2011 on
	Eos			2009 on		
	Golf VI			2009 on		
	Passat			2009 on		
	Passat CC			2009 on		
	Sharan			2011 on		
	Tiguan			2009 on		
	Tiguan			2009 on		
	Golf VI			2009 on		
	Passat			2009 on		
Passat Alltrack			2012 on			

- Post 2007 VAG TFSi vehicles require a set of specialist tooling when renewing or replacing the timing chain. These vehicles are now reaching the age where service and repair work requires the disassembly of these systems. It is for this reason that Eldon decided to produce a specialist set of tooling to assist the process.
- The K00344 is a specially designed tensioner lever for later Generation III 1.8 and 2.0 4v TFSi engines. Designed by Eldon Tools in house design team this one piece lever allows the user to push back the timing chain tensioner without removing the front engine cover.
- The K00344 is the Eldon equivalent to the VAG original equipment number T40243.
- The K00344 is designed to compliment the Eldon K00281 1.8 and 2.0 TFSi engine timing kit.

CHRYSLER GRAND VOYAGER 2.8D

K00459

Make	Model	Size	Engine Code	Year
Jeep	Cherokee	2.8 CRD	ENS(51C)	2008-2011
Chrysler	Grand Voyager	2.8 CRD	VM64C	2008-2011

ID	Part No.	OEM Ref.	Description
A	E10610	VM.9991	Crankshaft Locking Tool
B	E10613	VM.9992	Exhaust Camshaft Locking Tool

- Chrysler 2.8D specific timing tool set comprising of a Crankshaft locking tool and exhaust Camshaft locking tool.
- These tools allow the accurate holding and positioning of the above application to assist the timing/re-timing procedure.



FLYWHEEL LOCKING PINS | CHRYSLER 2.5 | 2.8 CRD

K00460

Applications:

Engines: R2516K (2.5) Twin cam (2001 to 2008)
R2816K4 (2.8) Twin cam (2001 to 2006)

Manufacturer: Jeep

Model: Jeep Cherokee 2001 to 2008

- These pins lock the flywheel to assist the timing procedure on 2.5/2.8 CRD engines.

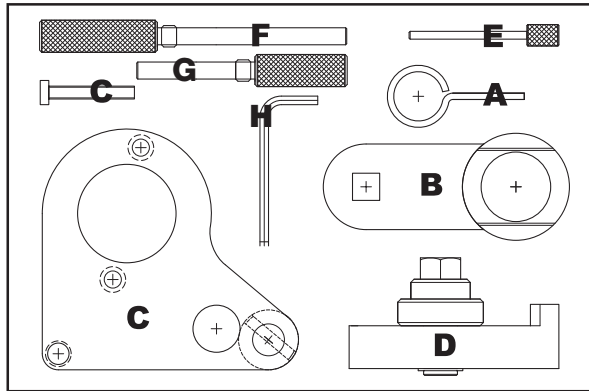
A - E10609-01 OEM VM1080

B - E10609-02 OEM VM8873



K00531

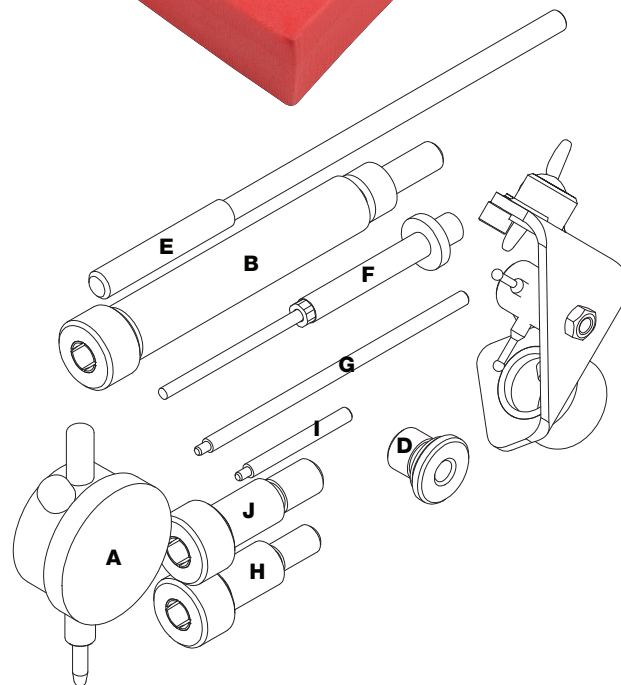
RENAULT 1.6 | 2.0 | 2.3 DCi



ID	Part No.	OEM Ref.	Description
A	23069 04Z	21-260	Tensioner Locking Pin 2.9mm
B	23069 75Z	MOT 1770 EN-48334 KM-956-1	Crankshaft Pulley Holding Tool
C	23069 76	MOT 1769 MOT 1969 EN-48332	Camshaft Setting Tool
D	23069 77	MOT 1773 EN-48331	Camshaft Gear Alignment Tool
E	23069 78Z	PIN 3.6MM KM-6130	Auxiliary Belt Tensioner Locking Pin
F	23069 79X	MOT 1766 EN-48330	Crankshaft Locking Pin (2.0 2.3 DCi)
G	E10757	MOT 1970	Crankshaft Timing Pin (1.6 DCi)
H		4mm Hex Key	4mm Hex Key use with D

Make	Model	Size	Engine Code	Year
Renault	Scenic III	1.6 DCi	R9M	2011
	Grand Scenic III	1.6 DCi	R9M	2011
	Megane III	1.6 DCi	R9M	2012
	Laguna III	2.0 DCi	M9R	2007
	Laguna III	2.0 GT DCi	M9R	2008
	Latitude	2.0 DCi	M9R	2010
	Trafic II	2.0 DCi	M9R	2008
	Vel Satis	2.0 DCi	M9R	2005
	Espace Grand Espace IV	2.0 DCi	M9R	2006
	Koleos	2.0 DCi	M9R	2008
	Laguna II	2.0 DCi	M9R	2005
	Laguna III	2.0 DCi	M9R	2007
	Megane II	2.0 DCi	M9R	2006
	Megane II	2.0 DCi	M9R	2007
	Megane III	2.0 DCi	M9R	2009
	Megane III	2.0 DCi	M9R	2009
	Scenic Grand Scenic II	2.0 DCi	M9R	2006
	Scenic Grand Scenic III	2.0 DCi	M9R	2009
	Trafic II	2.0 DCi	M9R	2006
	Vel Satis	2.0 DCi	M9R	2005
Master III	2.3 DCi	M9T	2010	
Megane III	1.6 DCi	R9M	2012	
Vauxhall/Opel	Vivaro	2.0 CDTi	M9R	2006
	Vivaro	2.0 CDTi ecoFlex	M9R	2011
	Movano-B	2.3 CDTi	M9R	2010
Nissan	Qashqai Qashqai+2	1.6 DCi	M9R	2011
	Primastar	2.0 DCi	M9R	2006
	Qashqai Qashqai+2	2.0 DCi	M9R	2007
	X-Trail	2.0 DCi	M9T	2007
	NV400	2.3 CDTi	R9M	2011
	X-Trail	2.0 DCi	M9T	2007
	NV400	2.3 CDTi	R9M	2011
	Qashqai+2	2.0 DCi	M9R	2007
	X-Trail	2.0 DCi	M9T	2007
NV400	2.3 CDTi	R9M	2011	

- Developed specifically to cover the 1.6, 2.0 and 2.3 DCi direct injection diesel engines found in the Renault and Nissan vehicle ranges.
- This kit consists of the components required to lock the crankshaft and cam pulleys in their timed position to allow the removal and replacement of the camshaft timing chain. It also includes the camshaft gear alignment tool.

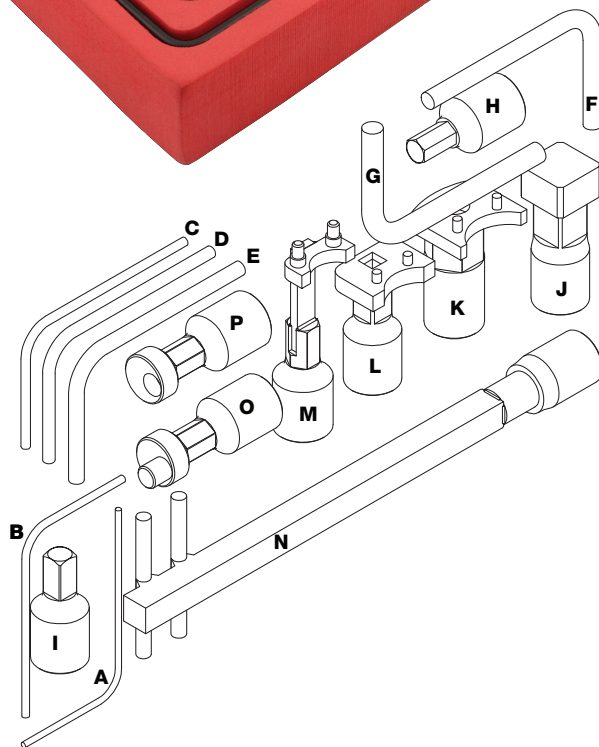
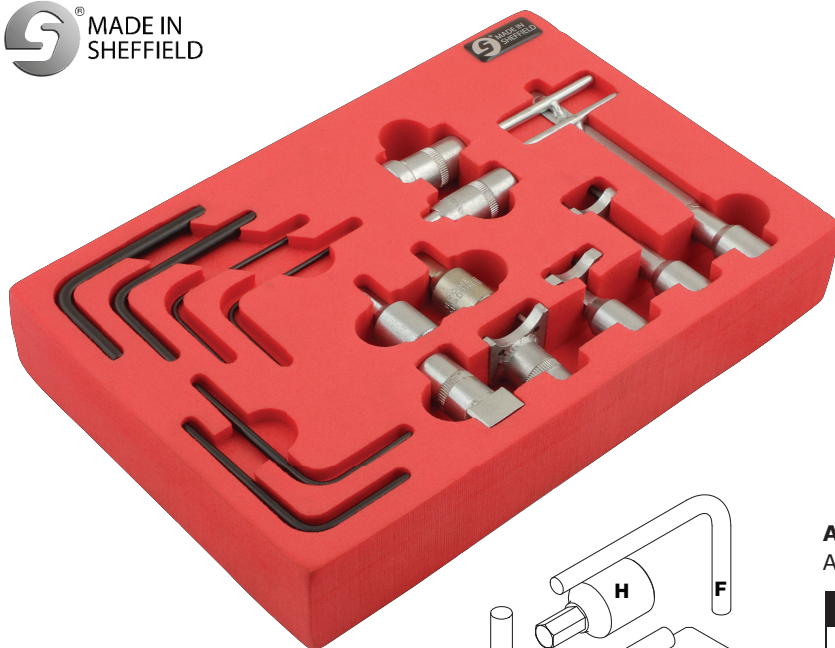


ID	Part No.	Description
A	23072 A	DTI - ord. style c/w Test Cert
B	23065 01	Adaptor Assy Zinc
C	23065 03A	DTI Extension item 3
D	23065 05X	Connector (chem. black)
E	23066 03A	Plunger
F	23067 02	Probe Assembly
G	23067 10	DTI/CAV Mounting Bracket
H	23076 01	Adaptor M8 Short Assy
I	23076 02A	DTI Extension item 2
J	23077 01	Adaptor M10 short

- For use on diesel pumps including Bosch EP/VE Rotaary, Kikki, Nippon and Denso, CAV Rotodiesel found on top entry and Peugeot XUD engines amongst others.

K00272

TENSIONER KIT

**Applications:**

Alfa Romeo, Mitsubishi, PSA, Renault and VAG.

ID	Part No.	Description
A	E10347 01	Dia. 2mm Tensioner Pin
B	E10347 02	Dia. 2.5mm Tensioner Pin
C	E10347 03	Dia. 3mm Tensioner Pin
D	E10347 04	Dia. 4mm Tensioner Pin
E	E10347 05	Dia. 5mm Tensioner Pin
F	E10347 06	Dia. 6mm Tensioner Pin
G	E10347 07	Dia. 7mm Tensioner Pin
H	23116 1Z	DPKey
I	23115 1Z	Drain Plug Key
J	E10482	19mm A/F Sq Drive Adaptor
K	E10483	VAG Tensioning Tool Adaptor
L	E10484	Hyundai Tensioning Tool Adaptor
M	E10485	VAG Tensioning Tool Adaptor
N	E10486	Renault Tensioning Tool Adaptor
O	E10487	Tensioning Tool Adaptor
P	E10488	Tensioning Tool Adaptor

- A fully comprehensive tensioner and locking pin set (2mm-7mm).



- Flywheel locking tool with handle



Eldon

Eldon Tool and Engineering Ltd

28 Don Road - Sheffield - S9 2UB - England

W www.eldontool.co.uk

E info@eldontool.co.uk

T +44 (0)114 2800 500

F +44 (0)114 2494 167



www.eldontool.co.uk